

Datasheet for ABIN927326 **anti-SNF8 antibody (N-Term)**

3 Images



[Go to Product page](#)

Overview

Quantity:	100 µL
Target:	SNF8
Binding Specificity:	N-Term
Reactivity:	Human, Rat, Mouse, Cow, Dog, Zebrafish (Danio rerio), Xenopus laevis, Chicken
Host:	Rabbit
Clonality:	Polyclonal
Conjugate:	This SNF8 antibody is un-conjugated
Application:	Western Blotting (WB), Immunohistochemistry (IHC)

Product Details

Immunogen:	EAP30 antibody was raised in rabbit using the N terminal of EAP30 as the immunogen
Cross-Reactivity:	Mouse (Murine), Rat (Rattus), Frog, Cow (Bovine), Dog (Canine), Chicken, Zebrafish (Brachydanio rerio)
Purification:	Purified

Target Details

Target:	SNF8
Alternative Name:	EAP30 (SNF8 Products)
Background:	ELL encodes an RNA polymerase II transcription factor that undergoes frequent translocation in acute myeloid leukemia. In addition to its elongation activity, ELL contains a novel type of RNA polymerase II interaction domain that is capable of repressing polymerase activity in

Target Details

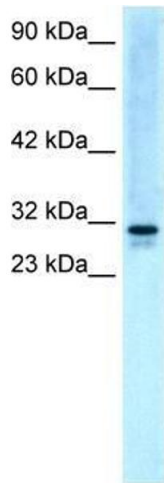
promoter-specific transcription. EAP30 is a subunit of the ELL complex. EAP30 can interact with ELL and derepress ELL's inhibitory activity in vitro. SNF8, VPS25, and VPS36 form ESCRT-II, a complex involved in endocytosis of ubiquitinated membrane proteins. SNF8, VPS25, and VPS36 are also associated in a multiprotein complex with RNA polymerase II elongation factor. Synonyms: Polyclonal EAP30 antibody, Anti-EAP30 antibody, Dot3 antibody, EAP30 antibody, VPS22 antibody.

Application Details

Application Notes:	Optimal conditions should be determined by the investigator.
Comment:	EAP30 Blocking Peptide, catalog no. 33R-6102, is also available for use as a blocking control in assays to test for specificity of this EAP30 antibody
Restrictions:	For Research Use only

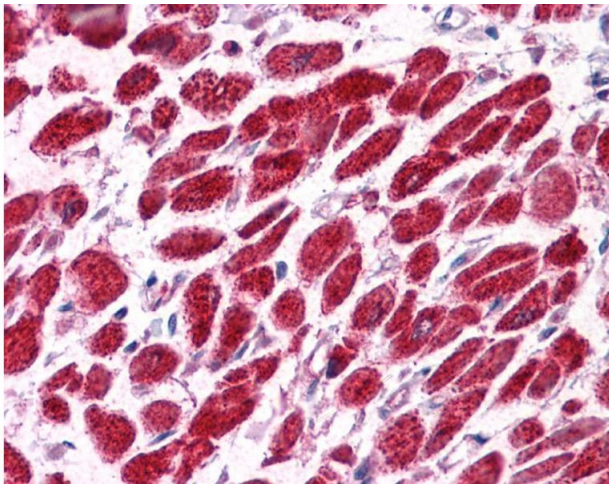
Handling

Format:	Lyophilized
Concentration:	Lot specific
Buffer:	Lyophilized powder. Add 50 μ L of distilled water. Final antibody concentration is 1 mg/mL in PBS buffer.
Handling Advice:	Avoid repeated freeze/thaw cycles.
Storage:	4 °C/-20 °C
Storage Comment:	Store at 4 °C, following reconstitution, aliquot and store at -20 °C.



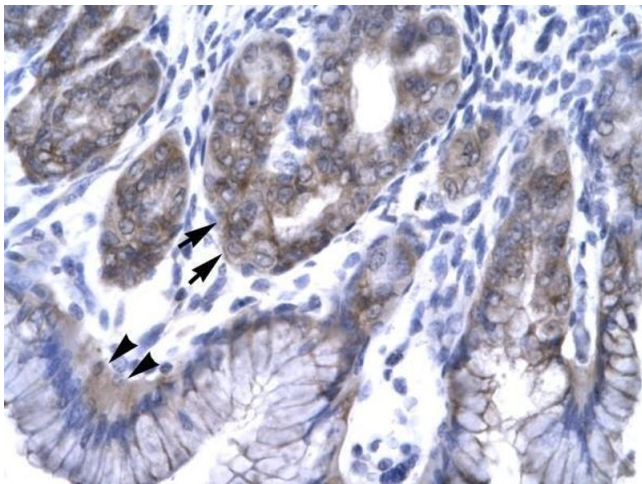
Western Blotting

Image 1. Western Blot showing EAP30 antibody used at a concentration of 5.0 ug/ml against HepG2 Cell Lysate



Immunohistochemistry

Image 2. EAP30 antibody was used for immunohistochemistry at a concentration of 4-8 ug/ml. Magnification is at 400X



Immunohistochemistry

Image 3. EAP30 antibody was used for immunohistochemistry at a concentration of 4-8 ug/ml to stain Epithelial Cells of Fundic Gland (arrows) and Surface Mucous Cells (Indicated with Arrow Heads) in Human Stomach. Magnification is at 400X