

Datasheet for ABIN927329
anti-OR13C5 antibody (Middle Region)



[Go to Product page](#)

1 Image

Overview

Quantity:	100 µL
Target:	OR13C5
Binding Specificity:	Middle Region
Reactivity:	Human, Rat, Dog
Host:	Rabbit
Clonality:	Polyclonal
Application:	Western Blotting (WB)

Product Details

Immunogen:	OR13 C5 antibody was raised in rabbit using the middle region of OR13 5 as the immunogen
Cross-Reactivity:	Rat (Rattus), Dog (Canine)
Purification:	Purified

Target Details

Target:	OR13C5
Alternative Name:	OR13C5 (OR13C5 Products)
Background:	Olfactory receptors interact with odorant molecules in the nose, to initiate a neuronal response that triggers the perception of a smell. The olfactory receptor proteins are members of a large family of G-protein-coupled receptors (GPCR) arising from single coding-exon genes. Olfactory receptors share a 7-transmembrane domain structure with many neurotransmitter and hormone receptors and are responsible for the recognition and G protein-mediated

Target Details

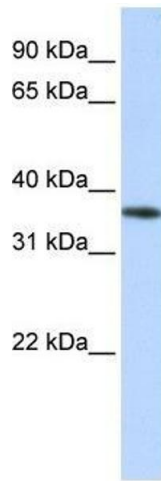
transduction of odorant signals. The olfactory receptor gene family is the largest in the genome. The nomenclature assigned to the olfactory receptor genes and proteins for this organism is independent of other organisms. Synonyms: Polyclonal OR13C5 antibody, Anti-OR13C5 antibody, olfactory receptor, family 13, subfamily C, member 5 antibody, OR9-11 antibody.

Application Details

Application Notes:	WB: 0.2-1 µg/mL Optimal conditions should be determined by the investigator.
Comment:	OR13C5 Blocking Peptide, catalog no. 33R-1705, is also available for use as a blocking control in assays to test for specificity of this OR13C5 antibody
Restrictions:	For Research Use only

Handling

Format:	Lyophilized
Concentration:	Lot specific
Buffer:	Lyophilized powder. Add 50 µL of distilled water. Final antibody concentration is 1 mg/mL in PBS buffer.
Handling Advice:	Avoid repeated freeze/thaw cycles.
Storage:	4 °C/-20 °C
Storage Comment:	Store at 4 °C, following reconstitution, aliquot and store at -20 °C.



Western Blotting

Image 1. OR13C5 antibody used at 0.2-1 ug/ml to detect target protein.