

Datasheet for ABIN927330
anti-SLC34A3 antibody (Middle Region)



[Go to Product page](#)

1 Image

Overview

Quantity:	100 µL
Target:	SLC34A3
Binding Specificity:	Middle Region
Reactivity:	Human, Mouse, Rat, Dog
Host:	Rabbit
Clonality:	Polyclonal
Application:	Western Blotting (WB)

Product Details

Immunogen:	SLC34 A3 antibody was raised in rabbit using the middle region of SLC34 3 as the immunogen
Cross-Reactivity:	Mouse (Murine), Rat (Rattus), Dog (Canine)
Purification:	Purified

Target Details

Target:	SLC34A3
Alternative Name:	SLC34A3 (SLC34A3 Products)
Background:	SLC34A3 contributes to the maintenance of inorganic phosphate (Pi) concentration at the kidney. Synonyms: Polyclonal SLC34A3 antibody, Anti-SLC34A3 antibody, solute carrier family 34, sodium phosphate, member 3 antibody, FLJ38680 antibody, HHRH antibody, NPTIIc antibody.

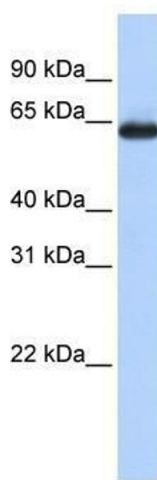
Application Details

Application Notes:	WB: 0.2-1 µg/mL Optimal conditions should be determined by the investigator.
Comment:	SLC34A3 Blocking Peptide, catalog no. 33R-3208, is also available for use as a blocking control in assays to test for specificity of this SLC34A3 antibody
Restrictions:	For Research Use only

Handling

Format:	Lyophilized
Concentration:	Lot specific
Buffer:	Lyophilized powder. Add 50 µL of distilled water. Final antibody concentration is 1 mg/mL in PBS buffer.
Handling Advice:	Avoid repeated freeze/thaw cycles.
Storage:	4 °C/-20 °C
Storage Comment:	Store at 4 °C, following reconstitution, aliquot and store at -20 °C.

Images



Western Blotting

Image 1. SLC34A3 antibody used at 0.2-1 ug/ml to detect target protein.