

Datasheet for ABIN927332

anti-DHR SX antibody (C-Term)[Go to Product page](#)**1** Image

Overview

Quantity:	100 µL
Target:	DHR SX
Binding Specificity:	C-Term
Reactivity:	Human
Host:	Rabbit
Clonality:	Polyclonal
Conjugate:	This DHR SX antibody is un-conjugated
Application:	Western Blotting (WB)

Product Details

Immunogen:	DHR SX antibody was raised in rabbit using the C terminal of DHR SX as the immunogen
Purification:	Purified

Target Details

Target:	DHR SX
Alternative Name:	DHR SX (DHR SX Products)
Background:	DHR SX belongs to the short-chain dehydrogenases/reductases (SDR) family. The exact function of DHR SX remains unknown. Synonyms: Polyclonal DHR SX antibody, Anti-DHR SX antibody, dehydrogenase/reductase, SDR family X-linked antibody, CXorf11 antibody, DHR S5X antibody, DHR S5Y antibody, DHR SXY antibody, DHR SY antibody.

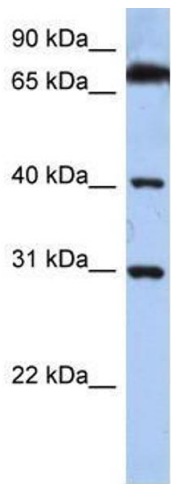
Application Details

Application Notes:	WB: 0.2-1 µg/mL Optimal conditions should be determined by the investigator.
Comment:	DHR SX Blocking Peptide, catalog no. 33R-1902, is also available for use as a blocking control in assays to test for specificity of this DHR SX antibody
Restrictions:	For Research Use only

Handling

Format:	Lyophilized
Concentration:	Lot specific
Buffer:	Lyophilized powder. Add 50 µL of distilled water. Final antibody concentration is 1 mg/mL in PBS buffer.
Handling Advice:	Avoid repeated freeze/thaw cycles.
Storage:	4 °C/-20 °C
Storage Comment:	Store at 4 °C, following reconstitution, aliquot and store at -20 °C.

Images



Western Blotting

Image 1. DHR SX antibody used at 0.2-1 ug/ml to detect target protein.