

Datasheet for ABIN927336 **anti-KDM2A antibody (N-Term)**



[Go to Product page](#)

2 Images

Overview

Quantity:	100 µL
Target:	KDM2A
Binding Specificity:	N-Term
Reactivity:	Human, Mouse, Rat, Dog, Pig, Zebrafish (Danio rerio)
Host:	Rabbit
Clonality:	Polyclonal
Conjugate:	This KDM2A antibody is un-conjugated
Application:	Western Blotting (WB), Immunohistochemistry (IHC)

Product Details

Immunogen:	FBXL11 antibody was raised in rabbit using the N terminal of FBXL11 as the immunogen
Cross-Reactivity:	Mouse (Murine), Rat (Rattus), Dog (Canine), Pig (Porcine), Zebrafish (Brachydanio rerio)
Purification:	Purified

Target Details

Target:	KDM2A
Alternative Name:	FBXL11 (KDM2A Products)
Background:	FBXL11 is a member of the F-box protein family which is characterized by an approximately 40 amino acid motif, the F-box. The F-box proteins constitute one of the four subunits of ubiquitin protein ligase complex called SCFs. The F-box proteins are divided into 3 classes: Fbws containing WD-40 domains, Fbls containing leucine-rich repeats, and Fbxs containing either

Target Details

different protein-protein interaction modules or no recognizable motifs. FBXL11 belongs to the Fbls class and, in addition to an F-box, contains at least 6 highly degenerated leucine-rich repeats. Synonyms: Polyclonal FBXL11 antibody, Anti-FBXL11 antibody, F-box and leucine-rich repeat protein 11 antibody.

Pathways: [Warburg Effect](#)

Application Details

Application Notes: WB: 0.2-1 µg/mL
Optimal conditions should be determined by the investigator.

Comment: FBXL11 Blocking Peptide, catalog no. 33R-7980, is also available for use as a blocking control in assays to test for specificity of this FBXL11 antibody

Restrictions: For Research Use only

Handling

Format: Lyophilized

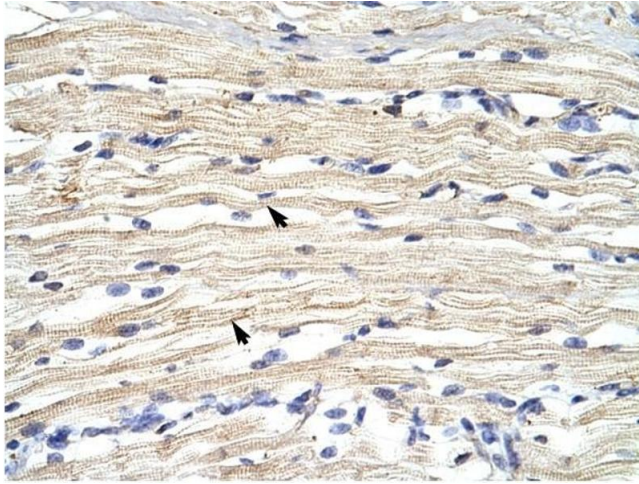
Concentration: Lot specific

Buffer: Lyophilized powder. Add 50 µL of distilled water. Final antibody concentration is 1 mg/mL in PBS buffer.

Handling Advice: Avoid repeated freeze/thaw cycles.

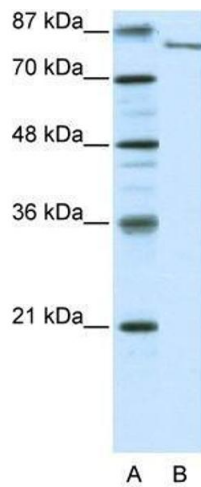
Storage: 4 °C/-20 °C

Storage Comment: Store at 4 °C, following reconstitution, aliquot and store at -20 °C.



Immunohistochemistry

Image 1. FBXL11 antibody was used for immunohistochemistry at a concentration of 4-8 ug/ml to stain Skeletal muscle cells (arrows) in Human Muscle. Magnification is at 400X



Western Blotting

Image 2. FBXL11 antibody used at 0.2-1 ug/ml to detect target protein.