

Datasheet for ABIN927337
anti-JMJD6 antibody (Middle Region)



[Go to Product page](#)

1 Image

Overview

Quantity:	100 µL
Target:	JMJD6
Binding Specificity:	Middle Region
Reactivity:	Human, Mouse, Rat, Dog, Cow, Zebrafish (Danio rerio), Chicken, Xenopus laevis
Host:	Rabbit
Clonality:	Polyclonal
Conjugate:	This JMJD6 antibody is un-conjugated
Application:	Western Blotting (WB)

Product Details

Immunogen:	PTDSR antibody was raised in rabbit using the middle region of PTDSR as the immunogen
Cross-Reactivity:	Zebrafish (Brachydanio rerio), Mouse (Murine), Rat (Rattus), Frog, Dog (Canine), Cow (Bovine), Chicken
Purification:	Purified

Target Details

Target:	JMJD6
Alternative Name:	PTDSR (JMJD6 Products)
Background:	PTDSR is required during embryogenesis and differentiation of multiple organs during embryogenesis. PTDSR probably acts as a key regulator of hematopoietic differentiation. PTDSR may not be required for apoptotic cell clearance by macrophages but seems to be

Target Details

necessary for the regulation of macrophage cytokine responses. Synonyms: Polyclonal PTDSR antibody, Anti-PTDSR antibody.

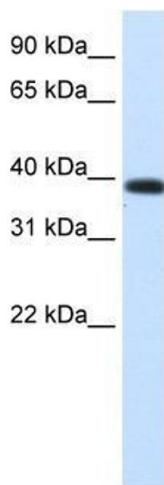
Application Details

Application Notes:	WB: 0.2-1 µg/mL Optimal conditions should be determined by the investigator.
Comment:	PTDSR Blocking Peptide, catalog no. 33R-7320, is also available for use as a blocking control in assays to test for specificity of this PTDSR antibody
Restrictions:	For Research Use only

Handling

Format:	Lyophilized
Concentration:	Lot specific
Buffer:	Lyophilized powder. Add 50 µL of distilled water. Final antibody concentration is 1 mg/mL in PBS buffer.
Handling Advice:	Avoid repeated freeze/thaw cycles.
Storage:	4 °C/-20 °C
Storage Comment:	Store at 4 °C, following reconstitution, aliquot and store at -20 °C.

Images



Western Blotting

Image 1. PTDSR antibody used at 0.2-1 ug/ml to detect target protein.