

Datasheet for ABIN927343

**anti-Metabotropic Glutamate Receptor 6 antibody (Middle Region)**[Go to Product page](#)**1** Image

## Overview

Quantity:	100 µL
Target:	Metabotropic Glutamate Receptor 6 (GRM6)
Binding Specificity:	Middle Region
Reactivity:	Human, Mouse, Rat, Dog, Rabbit, Zebrafish (Danio rerio), Chicken
Host:	Rabbit
Clonality:	Polyclonal
Application:	Western Blotting (WB)

## Product Details

Immunogen:	GRM6 antibody was raised in rabbit using the middle region of GRM6 as the immunogen
Cross-Reactivity:	Mouse (Murine), Rat (Rattus), Zebrafish (Brachydanio rerio), Rabbit, Dog (Canine), Chicken
Purification:	Purified

## Target Details

Target:	Metabotropic Glutamate Receptor 6 (GRM6)
Alternative Name:	GRM6 ( <a href="#">GRM6 Products</a> )
Background:	GRM6 is the receptor for glutamate. The activity of this receptor is mediated by a G-protein that inhibits adenylate cyclase activity. L-glutamate is the major excitatory neurotransmitter in the central nervous system and activates both ionotropic and metabotropic glutamate receptors. Glutamatergic neurotransmission is involved in most aspects of normal brain function and can be perturbed in many neuropathologic conditions. Synonyms: Polyclonal GRM6 antibody, Anti-

## Target Details

GRM6 antibody, glutamate receptor, metabotropic 6 antibody, CSNB1B antibody, DKFZp686H1993 antibody, GPRC1F antibody, MGLUR6 antibody, mGlu6 antibody.

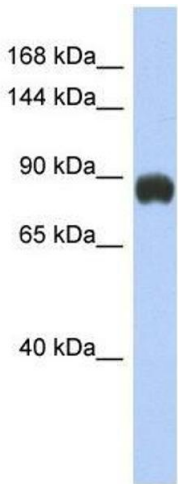
## Application Details

Application Notes:	WB: 0.2-1 µg/mL Optimal conditions should be determined by the investigator.
Comment:	GRM6 Blocking Peptide, catalog no. 33R-2416, is also available for use as a blocking control in assays to test for specificity of this GRM6 antibody
Restrictions:	For Research Use only

## Handling

Format:	Lyophilized
Concentration:	Lot specific
Buffer:	Lyophilized powder. Add 50 µL of distilled water. Final antibody concentration is 1 mg/mL in PBS buffer.
Handling Advice:	Avoid repeated freeze/thaw cycles.
Storage:	4 °C/-20 °C
Storage Comment:	Store at 4 °C, following reconstitution, aliquot and store at -20 °C.

## Images



### Western Blotting

**Image 1.** GRM6 antibody used at 0.2-1 ug/ml to detect target protein.