

Datasheet for ABIN927355  
**anti-PRMT3 antibody (Middle Region)**



[Go to Product page](#)

1 Image

## Overview

Quantity:	100 µL
Target:	PRMT3
Binding Specificity:	Middle Region
Reactivity:	Human, Mouse, Rat, Dog, Cow, Xenopus laevis
Host:	Rabbit
Clonality:	Polyclonal
Conjugate:	This PRMT3 antibody is un-conjugated
Application:	Western Blotting (WB)

## Product Details

Immunogen:	PRMT3 antibody was raised in rabbit using the middle region of PRMT3 as the immunogen
Cross-Reactivity:	Mouse (Murine), Rat (Rattus), Dog (Canine), Cow (Bovine), Frog
Purification:	Purified

## Target Details

Target:	PRMT3
Alternative Name:	PRMT3 ( <a href="#">PRMT3 Products</a> )
Background:	PRMT3 is a ribosomal protein methyltransferase that affects the cellular level of ribosomal subunits. Synonyms: Polyclonal PRMT3 antibody, Anti-PRMT3 antibody, protein arginine methyltransferase 3 antibody, HRMT1L3 antibody.

## Target Details

Pathways: [Protein targeting to Nucleus](#)

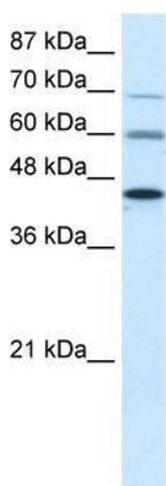
## Application Details

Application Notes:	WB: 0.2-1 µg/mL Optimal conditions should be determined by the investigator.
Comment:	PRMT3 Blocking Peptide, catalog no. 33R-3077, is also available for use as a blocking control in assays to test for specificity of this PRMT3 antibody
Restrictions:	For Research Use only

## Handling

Format:	Lyophilized
Concentration:	Lot specific
Buffer:	Lyophilized powder. Add 50 µL of distilled water. Final antibody concentration is 1 mg/mL in PBS buffer.
Handling Advice:	Avoid repeated freeze/thaw cycles.
Storage:	4 °C/-20 °C
Storage Comment:	Store at 4 °C, following reconstitution, aliquot and store at -20 °C.

## Images



### Western Blotting

**Image 1.** PRMT3 antibody used at 0.2-1 ug/ml to detect target protein.