

Datasheet for ABIN927364

anti-ESRRA antibody (C-Term)[Go to Product page](#)**1** Image

Overview

Quantity:	100 µL
Target:	ESRRA
Binding Specificity:	C-Term
Reactivity:	Human, Mouse
Host:	Rabbit
Clonality:	Polyclonal
Conjugate:	This ESRRA antibody is un-conjugated
Application:	Western Blotting (WB)

Product Details

Immunogen:	Esrra antibody was raised in rabbit using the C terminal of Esrra as the immunogen
Cross-Reactivity:	Mouse (Murine)
Purification:	Purified

Target Details

Target:	ESRRA
Alternative Name:	Esrra (ESRRA Products)
Background:	Esrra binds to an ERR-alpha response element (ERRE) containing a single consensus half-site, 5'-TNAAGGTCA-3'. It can bind to the medium-chain acyl coenzyme A dehydrogenase (MCAD) response element NRRE-1 and may act as an important regulator of MCAD promoter. It binds to the C1 region of the lactoferrin gene promoter. It requires dimerization and the coactivator,

Target Details

PGC-1A, for full activity. The ERRalpha/PGC1alpha complex is a regulator of energy metabolism. Synonyms: Polyclonal Esrra antibody, Anti-Esrra antibody, estrogen related receptor, alpha antibody, ERRalpha antibody, Err1 antibody, Estrra antibody, Nr3b1 antibody.

Pathways: [Nuclear Receptor Transcription Pathway](#), [Steroid Hormone Mediated Signaling Pathway](#), [Regulation of Lipid Metabolism by PPARalpha](#)

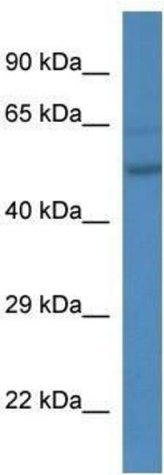
Application Details

Application Notes:	Optimal conditions should be determined by the investigator.
Comment:	Esrra Blocking Peptide, catalog no. 33R-1216, is also available for use as a blocking control in assays to test for specificity of this Esrra antibody
Restrictions:	For Research Use only

Handling

Format:	Lyophilized
Concentration:	Lot specific
Buffer:	Lyophilized powder. Add 50 µL of distilled water. Final antibody concentration is 1 mg/mL in PBS buffer.
Handling Advice:	Avoid repeated freeze/thaw cycles.
Storage:	4 °C/-20 °C
Storage Comment:	Store at 4 °C, following reconstitution, aliquot and store at -20 °C.

Images



Western Blotting

Image 1. Western Blot showing Esrra antibody used at a concentration of 1.0 ug/ml against Mouse Liver Lysate