

Datasheet for ABIN927367  
**anti-ZFH2 antibody (Middle Region)**



[Go to Product page](#)

2 Images

## Overview

Quantity:	100 µL
Target:	ZFH2
Binding Specificity:	Middle Region
Reactivity:	Human, Mouse, Dog, Rat, Cow
Host:	Rabbit
Clonality:	Polyclonal
Conjugate:	This ZFH2 antibody is un-conjugated
Application:	Western Blotting (WB), Immunohistochemistry (IHC)

## Product Details

Immunogen:	ZNF409 antibody was raised in rabbit using the middle region of ZNF409 as the immunogen
Cross-Reactivity:	Dog (Canine), Mouse (Murine), Rat (Rattus), Cow (Bovine)
Purification:	Purified

## Target Details

Target:	ZFH2
Alternative Name:	ZNF409 ( <a href="#">ZFH2 Products</a> )
Background:	ZNF209 is a candidate transcription factor. Synonyms: Polyclonal ZNF409 antibody, Anti-ZNF409 antibody, zinc finger protein 409 antibody.

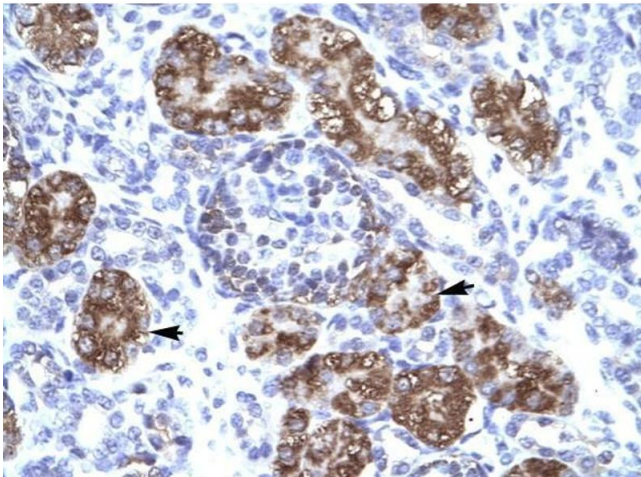
## Application Details

Application Notes:	WB: 0.2-1 µg/mL Optimal conditions should be determined by the investigator.
Comment:	ZNF409 Blocking Peptide, catalog no. 33R-3295, is also available for use as a blocking control in assays to test for specificity of this ZNF409 antibody
Restrictions:	For Research Use only

## Handling

Format:	Lyophilized
Concentration:	Lot specific
Buffer:	Lyophilized powder. Add 50 µL of distilled water. Final antibody concentration is 1 mg/mL in PBS buffer.
Handling Advice:	Avoid repeated freeze/thaw cycles.
Storage:	4 °C/-20 °C
Storage Comment:	Store at 4 °C, following reconstitution, aliquot and store at -20 °C.

## Images



### Immunohistochemistry

**Image 1.** ZNF409 antibody was used for immunohistochemistry at a concentration of 4-8 ug/ml to stain Epithelial cells of renal tubule (arrows) in Human Kidney. Magnification is at 400X



### Western Blotting

**Image 2.** ZNF409 antibody used at 0.2-1 ug/ml to detect target protein.