

Datasheet for ABIN927369
anti-AES antibody (Middle Region)



[Go to Product page](#)

1 Image

Overview

Quantity:	100 µL
Target:	AES
Binding Specificity:	Middle Region
Reactivity:	Human, Mouse, Rat, Cow, Xenopus laevis, Zebrafish (Danio rerio)
Host:	Rabbit
Clonality:	Polyclonal
Conjugate:	This AES antibody is un-conjugated
Application:	Western Blotting (WB)

Product Details

Immunogen:	AES antibody was raised in rabbit using the middle region of AES as the immunogen
Cross-Reactivity:	Mouse (Murine), Rat (Rattus), Cow (Bovine), Frog, Zebrafish (Brachydanio rerio)
Purification:	Purified

Target Details

Target:	AES
Alternative Name:	AES (AES Products)
Background:	AES is similar in sequence to the amino terminus of Drosophila enhancer of split groucho, a protein involved in neurogenesis during embryonic development. The protein, which belongs to the groucho/TLE family of proteins, can function as a homooligomer or as a heterooligomer with other family members to dominantly repress the expression of other family member

Target Details

genes. Synonyms: Polyclonal AES antibody, Anti-AES antibody, amino-terminal enhancer of split antibody, AES-1 antibody, AES-2 antibody, ESP1 antibody, GRG antibody, GRG5 antibody, TLE5 antibody.

Pathways: [WNT Signaling](#), [SARS-CoV-2 Protein Interactome](#)

Application Details

Application Notes: WB: 0.2-1 µg/mL
Optimal conditions should be determined by the investigator.

Comment: AES Blocking Peptide, catalog no. 33R-3767, is also available for use as a blocking control in assays to test for specificity of this AES antibody

Restrictions: For Research Use only

Handling

Format: Lyophilized

Concentration: Lot specific

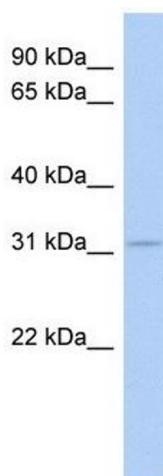
Buffer: Lyophilized powder. Add 50 µL of distilled water. Final antibody concentration is 1 mg/mL in PBS buffer.

Handling Advice: Avoid repeated freeze/thaw cycles.

Storage: 4 °C/-20 °C

Storage Comment: Store at 4 °C, following reconstitution, aliquot and store at -20 °C.

Images



Western Blotting

Image 1. AES antibody used at 0.2-1 ug/ml to detect target protein.