

Datasheet for ABIN927374
anti-SIRT7 antibody (Middle Region)



[Go to Product page](#)

1 Image

Overview

Quantity:	100 µL
Target:	SIRT7
Binding Specificity:	Middle Region
Reactivity:	Human, Dog, Cow
Host:	Rabbit
Clonality:	Polyclonal
Conjugate:	This SIRT7 antibody is un-conjugated
Application:	Western Blotting (WB)

Product Details

Immunogen:	SIRT7 antibody was raised in rabbit using the middle region of SIRT7 as the immunogen
Cross-Reactivity:	Cow (Bovine), Dog (Canine)
Purification:	Purified

Target Details

Target:	SIRT7
Alternative Name:	SIRT7 (SIRT7 Products)
Background:	<p>SIRT7 is a member of the sirtuin family of proteins, homologs to the yeast Sir2 protein. Members of the sirtuin family are characterized by a sirtuin core domain and grouped into four classes. The functions of human sirtuins have not yet been determined, however, yeast sirtuin proteins are known to regulate epigenetic gene silencing and suppress recombination of rDNA.</p>

Target Details

Studies suggest that the human sirtuins may function as intracellular regulatory proteins with mono-ADP-ribosyltransferase activity. SIRT7 is included in class IV of the sirtuin family.

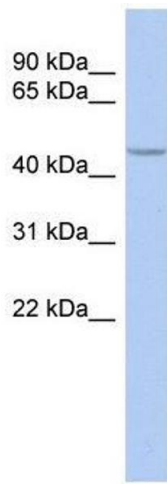
Synonyms: Polyclonal SIRT7 antibody, Anti-SIRT7 antibody, sirtuin, silent mating type information regulation 2 homolog 7, *S. cerevisiae* antibody, MGC126840 antibody, MGC126842 antibody, SIR2L7 antibody.

Application Details

Application Notes:	WB: 0.2-1 µg/mL Optimal conditions should be determined by the investigator.
Comment:	SIRT7 Blocking Peptide, catalog no. 33R-3223, is also available for use as a blocking control in assays to test for specificity of this SIRT7 antibody
Restrictions:	For Research Use only

Handling

Format:	Lyophilized
Concentration:	Lot specific
Buffer:	Lyophilized powder. Add 50 µL of distilled water. Final antibody concentration is 1 mg/mL in PBS buffer.
Handling Advice:	Avoid repeated freeze/thaw cycles.
Storage:	4 °C/-20 °C
Storage Comment:	Store at 4 °C, following reconstitution, aliquot and store at -20 °C.



Western Blotting

Image 1. SIRT7 antibody used at 0.2-1 ug/ml to detect target protein.