

Datasheet for ABIN927385
anti-SIN3A antibody (N-Term)



[Go to Product page](#)

2 Images

Overview

Quantity:	100 µL
Target:	SIN3A
Binding Specificity:	N-Term
Reactivity:	Human, Mouse, Rat, Chicken
Host:	Rabbit
Clonality:	Polyclonal
Conjugate:	This SIN3A antibody is un-conjugated
Application:	Western Blotting (WB)

Product Details

Immunogen:	SIN3 A antibody was raised in rabbit using the N terminal of SIN3 as the immunogen
Cross-Reactivity:	Mouse (Murine), Rat (Rattus), Chicken
Purification:	Purified

Target Details

Target:	SIN3A
Alternative Name:	SIN3A (SIN3A Products)
Background:	SIN3A is a transcriptional regulatory protein. It contains paired amphipathic helix (PAH) domains, which are important for protein-protein interactions and may mediate repression by the Mad-Max complex. The protein encoded by this gene is a transcriptional regulatory protein. It contains paired amphipathic helix (PAH) domains, which are important for protein-protein

Target Details

interactions and may mediate repression by the Mad-Max complex. Synonyms: Polyclonal SIN3A antibody, Anti-SIN3A antibody, SIN3 homolog A, transcription regulator, yeast antibody, DKFZP434K2235 antibody, FLJ90319 antibody, KIAA0700 antibody.

Pathways: [Activation of Innate immune Response](#), [Carbohydrate Homeostasis](#), [Chromatin Binding](#), [Regulation of Lipid Metabolism by PPARalpha](#)

Application Details

Application Notes: WB: 0.2-1 µg/mL
Optimal conditions should be determined by the investigator.

Comment: SIN3A Blocking Peptide, catalog no. 33R-4635, is also available for use as a blocking control in assays to test for specificity of this SIN3A antibody

Restrictions: For Research Use only

Handling

Format: Lyophilized

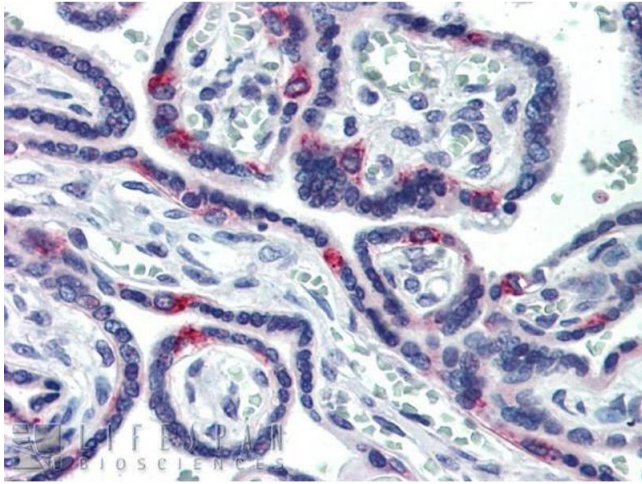
Concentration: Lot specific

Buffer: Lyophilized powder. Add 50 µL of distilled water. Final antibody concentration is 1 mg/mL in PBS buffer.

Handling Advice: Avoid repeated freeze/thaw cycles.

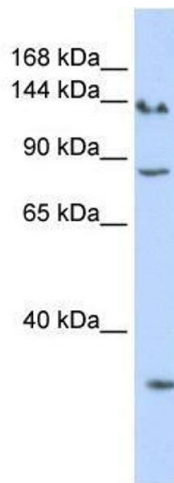
Storage: 4 °C/-20 °C

Storage Comment: Store at 4 °C, following reconstitution, aliquot and store at -20 °C.



Immunohistochemistry

Image 1. SIN3A antibody was used for immunohistochemistry at a concentration of 5.0 ug/ml to stain Human Placenta. Magnification is at 400X



Western Blotting

Image 2. SIN3A antibody used at 0.2-1 ug/ml to detect target protein.