

## Datasheet for ABIN927387 **anti-EHMT2 antibody (N-Term)**



[Go to Product page](#)

### 1 Image

#### Overview

Quantity:	100 µL
Target:	EHMT2
Binding Specificity:	N-Term
Reactivity:	Human, Mouse, Dog, Pig
Host:	Rabbit
Clonality:	Polyclonal
Conjugate:	This EHMT2 antibody is un-conjugated
Application:	Western Blotting (WB)

#### Product Details

Immunogen:	EHMT2 antibody was raised in rabbit using the N terminal of EHMT2 as the immunogen
Cross-Reactivity:	Mouse (Murine), Pig (Porcine), Dog (Canine)
Purification:	Purified

#### Target Details

Target:	EHMT2
Alternative Name:	EHMT2 ( <a href="#">EHMT2 Products</a> )
Background:	A cluster of genes, BAT1-BAT5, has been localized in the vicinity of the genes for TNF alpha and TNF beta. This gene is found near this cluster, it was mapped near the gene for C2 within a 120-kb region that included a HSP70 gene pair. These genes are all within the human major histocompatibility complex class III region. This gene was thought to be two different genes,

## Target Details

---

NG36 and G9a, adjacent to each other but a recent publication shows that there is only a single gene. Synonyms: Polyclonal EHMT2 antibody, Anti-EHMT2 antibody, euchromatic histone-lysine N-methyltransferase 2 antibody, BAT8 antibody, C6orf30 antibody, DKFZp686H08213 antibody, FLJ35547 antibody, G9A antibody, KMT1C antibody, NG36 antibody, NG36/G9a antibody.

## Application Details

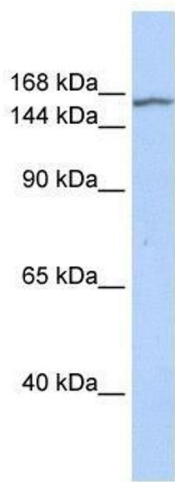
---

Application Notes:	WB: 0.2-1 µg/mL Optimal conditions should be determined by the investigator.
Comment:	EHMT2 Blocking Peptide, catalog no. 33R-9760, is also available for use as a blocking control in assays to test for specificity of this EHMT2 antibody
Restrictions:	For Research Use only

## Handling

---

Format:	Lyophilized
Concentration:	Lot specific
Buffer:	Lyophilized powder. Add 50 µL of distilled water. Final antibody concentration is 1 mg/mL in PBS buffer.
Handling Advice:	Avoid repeated freeze/thaw cycles.
Storage:	4 °C/-20 °C
Storage Comment:	Store at 4 °C, following reconstitution, aliquot and store at -20 °C.



### Western Blotting

**Image 1.** EHMT2 antibody used at 0.2-1 ug/ml to detect target protein.