

## Datasheet for ABIN927388 **anti-GRIP1 antibody (C-Term)**



[Go to Product page](#)

### 1 Image

#### Overview

Quantity:	100 µL
Target:	GRIP1
Binding Specificity:	C-Term
Reactivity:	Human, Mouse, Rat, Zebrafish (Danio rerio)
Host:	Rabbit
Clonality:	Polyclonal
Conjugate:	This GRIP1 antibody is un-conjugated
Application:	Western Blotting (WB)

#### Product Details

Immunogen:	GRIP1 antibody was raised in rabbit using the C terminal of GRIP1 as the immunogen
Cross-Reactivity:	Mouse (Murine), Rat (Rattus), Zebrafish (Brachydanio rerio)
Purification:	Purified

#### Target Details

Target:	GRIP1
Alternative Name:	GRIP1 ( <a href="#">GRIP1 Products</a> )
Background:	GRIP1 may play a role as a localized scaffold for the assembly of a multiprotein signaling complex and as mediator of the trafficking of its binding partners at specific subcellular location in neurons. Synonyms: Polyclonal GRIP1 antibody, Anti-GRIP1 antibody, glutamate receptor interacting protein 1 antibody.

## Target Details

Pathways: [Intracellular Steroid Hormone Receptor Signaling Pathway](#)

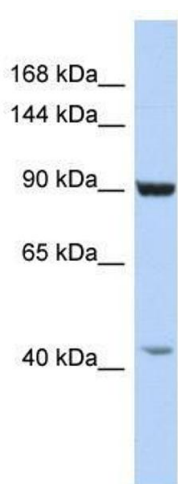
## Application Details

Application Notes:	WB: 0.2-1 µg/mL Optimal conditions should be determined by the investigator.
Comment:	GRIP1 Blocking Peptide, catalog no. 33R-8113, is also available for use as a blocking control in assays to test for specificity of this GRIP1 antibody
Restrictions:	For Research Use only

## Handling

Format:	Lyophilized
Concentration:	Lot specific
Buffer:	Lyophilized powder. Add 50 µL of distilled water. Final antibody concentration is 1 mg/mL in PBS buffer.
Handling Advice:	Avoid repeated freeze/thaw cycles.
Storage:	4 °C/-20 °C
Storage Comment:	Store at 4 °C, following reconstitution, aliquot and store at -20 °C.

## Images



### Western Blotting

**Image 1.** GRIP1 antibody used at 2.5 ug/ml to detect target protein.