

Datasheet for ABIN927400  
**anti-Mars (MARS) (Middle Region) antibody**



[Go to Product page](#)

1 Image

## Overview

Quantity:	100 µL
Target:	Mars (MARS)
Binding Specificity:	Middle Region
Reactivity:	Human, Mouse, Rat, Cow, Dog, Zebrafish (Danio rerio), Xenopus laevis
Host:	Rabbit
Clonality:	Polyclonal
Conjugate:	Un-conjugated
Application:	Western Blotting (WB)

## Product Details

Immunogen:	MARS antibody was raised in rabbit using the middle region of MARS as the immunogen
Cross-Reactivity:	Mouse (Murine), Rat (Rattus), Dog (Canine), Cow (Bovine), Frog, Zebrafish (Brachydanio rerio)
Purification:	Purified

## Target Details

Target:	Mars (MARS)
Abstract:	<a href="#">MARS Products</a>
Background:	Aminoacyl-tRNA synthetases are a class of enzymes that charge tRNAs with their cognate amino acids. MARS belongs to the class I family of tRNA synthetases. Aminoacyl-tRNA synthetases are a class of enzymes that charge tRNAs with their cognate amino acids. The protein encoded by this gene belongs to the class I family of tRNA synthetases. Synonyms:

## Target Details

Polyclonal MARS antibody, Anti-MARS antibody, methionyl-tRNA synthetase antibody, FLJ35667 antibody, METRS antibody, MTRNS antibody.

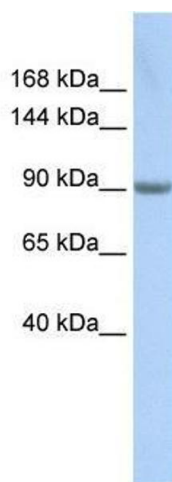
## Application Details

Application Notes:	WB: 0.2-1 µg/mL Optimal conditions should be determined by the investigator.
Comment:	MARS Blocking Peptide, catalog no. 33R-3311, is also available for use as a blocking control in assays to test for specificity of this MARS antibody
Restrictions:	For Research Use only

## Handling

Format:	Lyophilized
Concentration:	Lot specific
Buffer:	Lyophilized powder. Add 50 µL of distilled water. Final antibody concentration is 1 mg/mL in PBS buffer.
Handling Advice:	Avoid repeated freeze/thaw cycles.
Storage:	4 °C/-20 °C
Storage Comment:	Store at 4 °C, following reconstitution, aliquot and store at -20 °C.

## Images



### Western Blotting

**Image 1.** MARS antibody used at 0.2-1 ug/ml to detect target protein.