

Datasheet for ABIN927401

anti-MAP4K6 antibody (Middle Region)[Go to Product page](#)**1** Image

Overview

Quantity:	100 µL
Target:	MAP4K6 (MINK1)
Binding Specificity:	Middle Region
Reactivity:	Human, Mouse, Rat, Cow
Host:	Rabbit
Clonality:	Polyclonal
Conjugate:	This MAP4K6 antibody is un-conjugated
Application:	Western Blotting (WB)

Product Details

Immunogen:	MINK1 antibody was raised in rabbit using the middle region of MINK1 as the immunogen
Cross-Reactivity:	Mouse (Murine), Rat (Rattus), Cow (Bovine)
Purification:	Purified

Target Details

Target:	MAP4K6 (MINK1)
Alternative Name:	MINK1 (MINK1 Products)
Background:	MINK1 is a serine/threonine kinase belonging to the germinal center kinase (GCK) family. The protein is structurally similar to the kinases that are related to NIK and may belong to a distinct subfamily of NIK-related kinases within the GCK family. Studies of the mouse homolog indicate an up-regulation of expression in the course of postnatal mouse cerebral development and

Target Details

activation of the cJun N-terminal kinase (JNK) and the p38 pathways. Synonyms: Polyclonal MINK1 antibody, Anti-MINK1 antibody, misshapen-like kinase 1, zebrafish antibody, B55 antibody, MAP4K6 antibody, MGC21111 antibody, MINK antibody, YSK2 antibody, ZC3 antibody, hMINK antibody, hMINKbeta antibody.

Pathways: [Synaptic Membrane](#)

Application Details

Application Notes: WB: 0.2-1 µg/mL
Optimal conditions should be determined by the investigator.

Comment: MINK1 Blocking Peptide, catalog no. 33R-7024, is also available for use as a blocking control in assays to test for specificity of this MINK1 antibody

Restrictions: For Research Use only

Handling

Format: Lyophilized

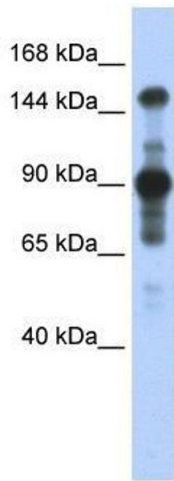
Concentration: Lot specific

Buffer: Lyophilized powder. Add 50 µL of distilled water. Final antibody concentration is 1 mg/mL in PBS buffer.

Handling Advice: Avoid repeated freeze/thaw cycles.

Storage: 4 °C/-20 °C

Storage Comment: Store at 4 °C, following reconstitution, aliquot and store at -20 °C.



Western Blotting

Image 1. MINK1 antibody used at 0.2-1 ug/ml to detect target protein.