

Datasheet for ABIN927405 **anti-TRAFD1 antibody (C-Term)**

2 Images



[Go to Product page](#)

Overview

Quantity:	100 µL
Target:	TRAFD1
Binding Specificity:	C-Term
Reactivity:	Human, Mouse, Rat, Cow, Dog
Host:	Rabbit
Clonality:	Polyclonal
Conjugate:	This TRAFD1 antibody is un-conjugated
Application:	Western Blotting (WB), Immunohistochemistry (IHC)

Product Details

Immunogen:	TRAFD1 antibody was raised in rabbit using the C terminal of TRAFD1 as the immunogen
Cross-Reactivity:	Rat (Rattus), Mouse (Murine), Dog (Canine), Cow (Bovine)
Purification:	Purified

Target Details

Target:	TRAFD1
Alternative Name:	TRAFD1 (TRAFD1 Products)
Background:	TRAFD1 is a new candidate transcription factor. Synonyms: Polyclonal TRAFD1 antibody, Anti-TRAFD1 antibody, TRAF-type zinc finger domain containing 1 antibody.

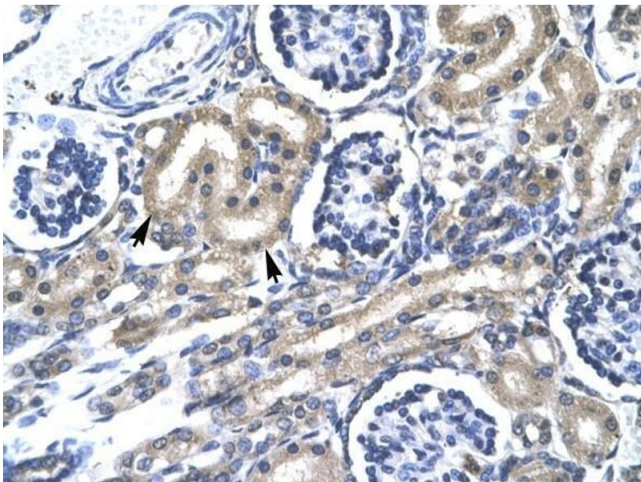
Application Details

Application Notes:	WB: 0.2-1 µg/mL Optimal conditions should be determined by the investigator.
Comment:	TRAFD1 Blocking Peptide, catalog no. 33R-8986, is also available for use as a blocking control in assays to test for specificity of this TRAFD1 antibody
Restrictions:	For Research Use only

Handling

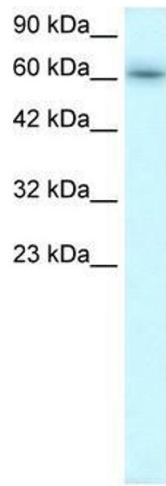
Format:	Lyophilized
Concentration:	Lot specific
Buffer:	Lyophilized powder. Add 50 µL of distilled water. Final antibody concentration is 1 mg/mL in PBS buffer.
Handling Advice:	Avoid repeated freeze/thaw cycles.
Storage:	4 °C/-20 °C
Storage Comment:	Store at 4 °C, following reconstitution, aliquot and store at -20 °C.

Images



Immunohistochemistry

Image 1. TRAFD1 antibody was used for immunohistochemistry at a concentration of 4-8 ug/ml to stain Epithelial cells of renal tubule (Indicated with Arrows) in Human Kidney. Magnification is at 400X



Western Blotting

Image 2. TRAFD1 antibody used at 0.2-1 ug/ml to detect target protein.