

Datasheet for ABIN927417
anti-ZNF624 antibody (Middle Region)



[Go to Product page](#)

1 Image

Overview

Quantity:	100 µL
Target:	ZNF624
Binding Specificity:	Middle Region
Reactivity:	Human, Cow, Dog, Mouse, Rat
Host:	Rabbit
Clonality:	Polyclonal
Conjugate:	This ZNF624 antibody is un-conjugated
Application:	Western Blotting (WB)

Product Details

Immunogen:	ZNF624 antibody was raised in rabbit using the middle region of ZNF624 as the immunogen
Cross-Reactivity:	Dog (Canine), Mouse (Murine), Rat (Rattus), Cow (Bovine)
Purification:	Purified

Target Details

Target:	ZNF624
Alternative Name:	ZNF624 (ZNF624 Products)
Background:	This gene, located on chromosome 17, encodes a protein that is part of the zinc finger family. Synonyms: Polyclonal ZNF624 antibody, Anti-ZNF624 antibody, zinc finger protein 624 antibody.

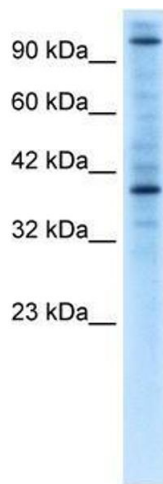
Application Details

Application Notes:	WB: 0.2-1 µg/mL Optimal conditions should be determined by the investigator.
Comment:	ZNF624 Blocking Peptide, catalog no. 33R-7441, is also available for use as a blocking control in assays to test for specificity of this ZNF624 antibody
Restrictions:	For Research Use only

Handling

Format:	Lyophilized
Concentration:	Lot specific
Buffer:	Lyophilized powder. Add 50 µL of distilled water. Final antibody concentration is 1 mg/mL in PBS buffer.
Handling Advice:	Avoid repeated freeze/thaw cycles.
Storage:	4 °C/-20 °C
Storage Comment:	Store at 4 °C, following reconstitution, aliquot and store at -20 °C.

Images



Western Blotting

Image 1. ZNF624 antibody used at 0.125 µg/ml to detect target protein.