

Datasheet for ABIN927422 **anti-PML antibody (C-Term)**

3 Images



[Go to Product page](#)

Overview

Quantity:	100 µL
Target:	PML
Binding Specificity:	C-Term
Reactivity:	Human, Mouse, Rat
Host:	Rabbit
Clonality:	Polyclonal
Conjugate:	This PML antibody is un-conjugated
Application:	Western Blotting (WB)

Product Details

Immunogen:	PML antibody was raised in rabbit using the C terminal of PML as the immunogen
Cross-Reactivity:	Mouse (Murine), Rat (Rattus)
Purification:	Purified

Target Details

Target:	PML
Alternative Name:	PML (PML Products)
Background:	<p>PML is a member of the tripartite motif (TRIM) family. The TRIM motif includes three zinc-binding domains, a RING, a B-box type 1 and a B-box type 2, and a coiled-coil region. PML localizes to nuclear bodies where it functions as a transcription factor and tumor suppressor. Its expression is cell-cycle related and it regulates the p53 response to oncogenic signals. The</p>

Target Details

gene is often involved in the translocation with the retinoic acid receptor alpha gene associated with acute promyelocytic leukemia (APL). Extensive alternative splicing of this gene results in several variations of the protein's central and C-terminal regions, all variants encode the same N-terminus. Synonyms: Polyclonal PML antibody, Anti-PML antibody, promyelocytic leukemia antibody, MYL antibody, PP8675 antibody, RNF71 antibody, TRIM19 antibody.

Pathways: [p53 Signaling](#), [Retinoic Acid Receptor Signaling Pathway](#), [Maintenance of Protein Location](#), [Positive Regulation of Endopeptidase Activity](#), [Protein targeting to Nucleus](#)

Application Details

Application Notes: Optimal conditions should be determined by the investigator.

Comment: PML Blocking Peptide, catalog no. 33R-2443, is also available for use as a blocking control in assays to test for specificity of this PML antibody

Restrictions: For Research Use only

Handling

Format: Lyophilized

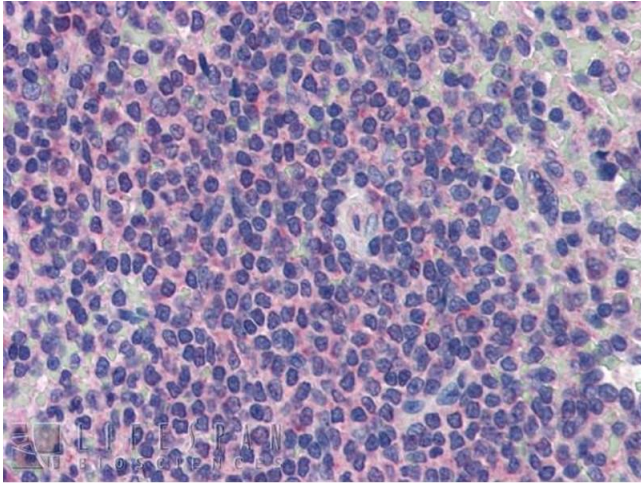
Concentration: Lot specific

Buffer: Lyophilized powder. Add 50 μ L of distilled water. Final antibody concentration is 1 mg/mL in PBS buffer.

Handling Advice: Avoid repeated freeze/thaw cycles.

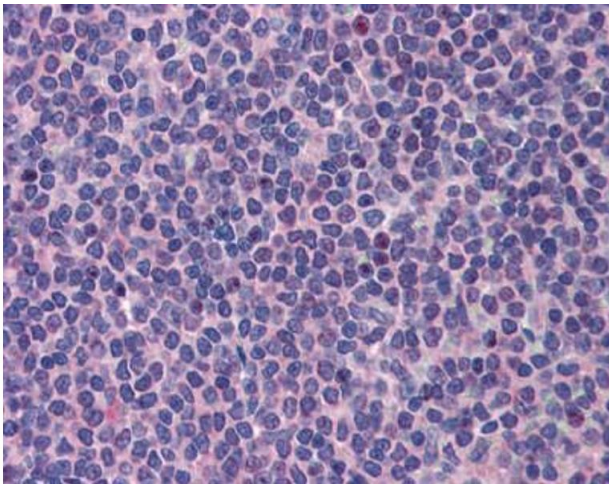
Storage: 4 °C/-20 °C

Storage Comment: Store at 4 °C, following reconstitution, aliquot and store at -20 °C.



Immunohistochemistry

Image 1. PML antibody was used for immunohistochemistry at a concentration of 5.0 ug/ml to stain Human Spleen. Magnification is at



Immunohistochemistry

Image 2. PML antibody was used for immunohistochemistry at a concentration of 4-8 ug/ml. Magnification is at 400X



Western Blotting

Image 3. Western Blot showing PML antibody used at a concentration of 1.0 ug/ml against Hela Cell Lysate