

Datasheet for ABIN927429  
**anti-BBX antibody (Middle Region)**



[Go to Product page](#)

1 Image

## Overview

|                      |                                    |
|----------------------|------------------------------------|
| Quantity:            | 100 µL                             |
| Target:              | BBX                                |
| Binding Specificity: | Middle Region                      |
| Reactivity:          | Human, Mouse, Rat, Dog             |
| Host:                | Rabbit                             |
| Clonality:           | Polyclonal                         |
| Conjugate:           | This BBX antibody is un-conjugated |
| Application:         | Western Blotting (WB)              |

## Product Details

|                   |   |
|-------------------|---|
| Immunogen:        | BBX antibody was raised in rabbit using the middle region of BBX as the immunogen |
| Cross-Reactivity: | Mouse (Murine), Rat (Rattus), Dog (Canine)  |
| Purification:     | Purified  |

## Target Details

|                   |  |
|-------------------|--|
| Target:           | BBX  |
| Alternative Name: | BBX ( <a href="#">BBX Products</a> )   |
| Background:       | BBX is a transcription factor that is necessary for cell cycle progression from G1 to S phase.<br>Synonyms: Polyclonal BBX antibody, Anti-BBX antibody, bobby sox homolog, Drosophila antibody, HSPC339 antibody, MDS001 antibody. |

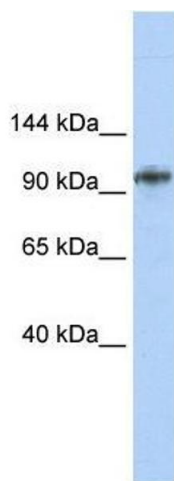
## Application Details

|                    |  |
|--------------------|--|
| Application Notes: | WB: 0.2-1 µg/mL<br>Optimal conditions should be determined by the investigator.  |
| Comment:           | BBX Blocking Peptide, catalog no. 33R-4495, is also available for use as a blocking control in assays to test for specificity of this BBX antibody |
| Restrictions:      | For Research Use only  |

## Handling

|                  |  |
|------------------|--|
| Format:          | Lyophilized  |
| Concentration:   | Lot specific   |
| Buffer:          | Lyophilized powder. Add 50 µL of distilled water. Final antibody concentration is 1 mg/mL in PBS buffer. |
| Handling Advice: | Avoid repeated freeze/thaw cycles.   |
| Storage:         | 4 °C/-20 °C  |
| Storage Comment: | Store at 4 °C, following reconstitution, aliquot and store at -20 °C.                                    |

## Images



### Western Blotting

**Image 1.** BBX antibody used at 1.25 µg/ml to detect target protein.