

Datasheet for ABIN927431
anti-DMRTA2 antibody (C-Term)



[Go to Product page](#)

2 Images

Overview

Quantity:	100 µL
Target:	DMRTA2
Binding Specificity:	C-Term
Reactivity:	Human, Mouse, Cow, Rat
Host:	Rabbit
Clonality:	Polyclonal
Conjugate:	This DMRTA2 antibody is un-conjugated
Application:	Western Blotting (WB), Immunohistochemistry (IHC)

Product Details

Immunogen:	DMRTA2 antibody was raised in rabbit using the C terminal of DMRTA2 as the immunogen
Cross-Reactivity:	Mouse (Murine), Rat (Rattus), Cow (Bovine)
Purification:	Purified

Target Details

Target:	DMRTA2
Alternative Name:	DMRTA2 (DMRTA2 Products)
Background:	DMRTA2 is involved in gonadal differentiation. The gene is part of five novel human DM genes that map to three well-defined regions of chromosomes 1, 9, and 19 (one gene on chromosome 19 having an additional homolog on chromosome X). Synonyms: Polyclonal DMRTA2 antibody, Anti-DMRTA2 antibody, DMRT-like family A2 antibody.

Application Details

Application Notes:	WB: 0.2-1 µg/mL Optimal conditions should be determined by the investigator.
Comment:	DMRTA2 Blocking Peptide, catalog no. 33R-3059, is also available for use as a blocking control in assays to test for specificity of this DMRTA2 antibody
Restrictions:	For Research Use only

Handling

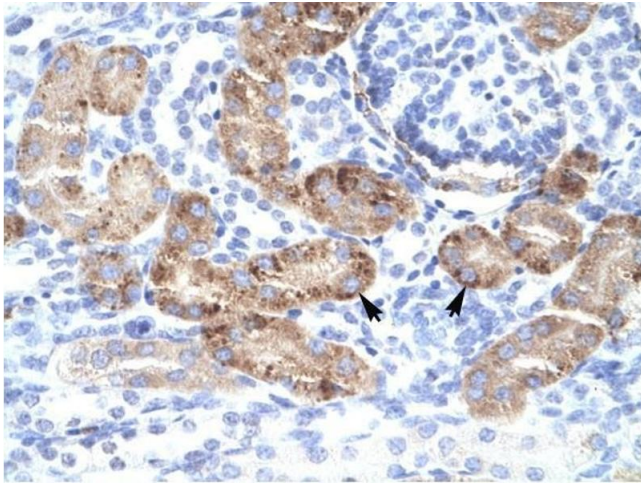
Format:	Lyophilized
Concentration:	Lot specific
Buffer:	Lyophilized powder. Add 50 µL of distilled water. Final antibody concentration is 1 mg/mL in PBS buffer.
Handling Advice:	Avoid repeated freeze/thaw cycles.
Storage:	4 °C/-20 °C
Storage Comment:	Store at 4 °C, following reconstitution, aliquot and store at -20 °C.

Images



Western Blotting

Image 1. DMRTA2 antibody used at 0.2-1 ug/ml to detect target protein.



Immunohistochemistry

Image 2. DMRTA2 antibody was used for immunohistochemistry at a concentration of 4-8 ug/ml to stain Epithelial cells of renal tubule (Indicated with Arrows) in Human Kidney. Magnification is at 400X