

## Datasheet for ABIN927437 **anti-TUT1 antibody (N-Term)**



[Go to Product page](#)

### 1 Image

#### Overview

Quantity:	100 µL
Target:	TUT1
Binding Specificity:	N-Term
Reactivity:	Human, Mouse, Dog, Cow
Host:	Rabbit
Clonality:	Polyclonal
Conjugate:	This TUT1 antibody is un-conjugated
Application:	Western Blotting (WB)

#### Product Details

Immunogen:	TUT1 antibody was raised in rabbit using the N terminal of TUT1 as the immunogen
Cross-Reactivity:	Mouse (Murine), Dog (Canine), Cow (Bovine)
Purification:	Purified

#### Target Details

Target:	TUT1
Alternative Name:	TUT1 ( <a href="#">TUT1 Products</a> )
Background:	TUT1 is a nucleotidyl transferase that functions as both a terminal uridylyltransferase and a nuclear poly(A) polymerase. TUT1 specifically adds and removes nucleotides from the 3' end of small nuclear RNAs and select mRNAs and may function in controlling gene expression and cell proliferation. TUT1 specifically catalyzes uridylylation of U6 snRNA and is essential for cell

## Target Details

proliferation. Synonyms: Polyclonal TUT1 antibody, Anti-TUT1 antibody, terminal uridylyl transferase 1, U6 snRNA-specific antibody, FLJ21850 antibody, FLJ22267 antibody, FLJ22347 antibody, MGC131987 antibody, MGC149809 antibody, PAPD2 antibody, RBM21 antibody, TUTase antibody.

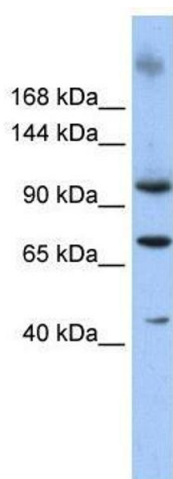
## Application Details

Application Notes:	WB: 0.2-1 µg/mL Optimal conditions should be determined by the investigator.
Comment:	TUT1 Blocking Peptide, catalog no. 33R-1665, is also available for use as a blocking control in assays to test for specificity of this TUT1 antibody
Restrictions:	For Research Use only

## Handling

Format:	Lyophilized
Concentration:	Lot specific
Buffer:	Lyophilized powder. Add 50 µL of distilled water. Final antibody concentration is 1 mg/mL in PBS buffer.
Handling Advice:	Avoid repeated freeze/thaw cycles.
Storage:	4 °C/-20 °C
Storage Comment:	Store at 4 °C, following reconstitution, aliquot and store at -20 °C.

## Images



### Western Blotting

**Image 1.** Western Blot showing TUT1 antibody used at a concentration of 1-2 µg/ml to detect its target protein.