

Datasheet for ABIN927438
anti-SNAIL antibody (N-Term)



[Go to Product page](#)

3 Images

Overview

Quantity:	100 µL
Target:	SNAIL (SNAI1)
Binding Specificity:	N-Term
Reactivity:	Human, Mouse, Rat
Host:	Rabbit
Clonality:	Polyclonal
Conjugate:	This SNAIL antibody is un-conjugated
Application:	Western Blotting (WB), Immunohistochemistry (IHC)

Product Details

Immunogen:	SNAI1 antibody was raised in rabbit using the N terminal of SNAI1 as the immunogen
Cross-Reactivity:	Mouse (Murine), Rat (Rattus)
Purification:	Purified

Target Details

Target:	SNAIL (SNAI1)
Alternative Name:	SNAI1 (SNAI1 Products)
Background:	The Drosophila embryonic protein snail is a zinc finger transcriptional repressor which downregulates the expression of ectodermal genes within the mesoderm. The nuclear protein encoded by this gene is structurally similar to the Drosophila snail protein, and is also thought to be critical for mesoderm formation in the developing embryo. Synonyms: Polyclonal SNAI1

Target Details

antibody, Anti-SNAI1 antibody, snail homolog 1, Drosophila antibody.

Pathways: [Negative Regulation of intrinsic apoptotic Signaling](#)

Application Details

Application Notes:	Optimal conditions should be determined by the investigator.
Comment:	SNAI1 Blocking Peptide, catalog no. 33R-6304, is also available for use as a blocking control in assays to test for specificity of this SNAI1 antibody
Restrictions:	For Research Use only

Handling

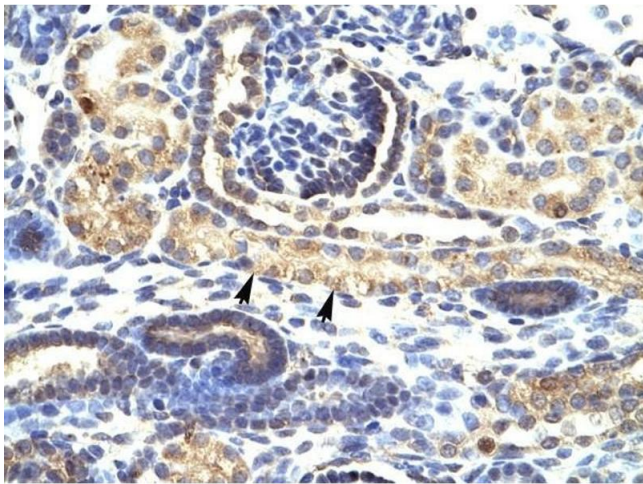
Format:	Lyophilized
Concentration:	Lot specific
Buffer:	Lyophilized powder. Add 50 µL of distilled water. Final antibody concentration is 1 mg/mL in PBS buffer.
Handling Advice:	Avoid repeated freeze/thaw cycles.
Storage:	4 °C/-20 °C
Storage Comment:	Store at 4 °C, following reconstitution, aliquot and store at -20 °C.

Images



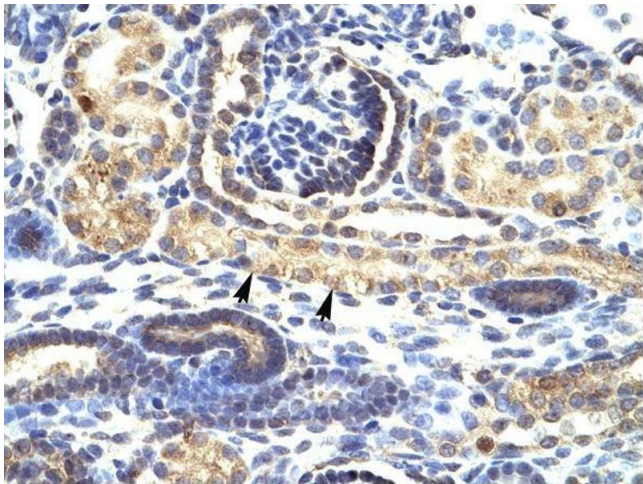
Western Blotting

Image 1. Western Blot showing SNAI1 antibody used at a concentration of 0.5 ug/ml against Jurkat Cell Lysate



Immunohistochemistry

Image 2. SNAI1 antibody was used for immunohistochemistry at a concentration of 4-8 ug/ml to stain Epithelial cells of renal tubule (arrows) in Human Kidney. Magnification is at 400X



Immunohistochemistry

Image 3. SNAI1 antibody was used for immunohistochemistry at a concentration of 4-8 ug/ml. Magnification is at 400X