

Datasheet for ABIN927443
anti-TADA2L antibody (C-Term)



[Go to Product page](#)

1 Image

Overview

Quantity:	100 µL
Target:	TADA2L (TADA2A)
Binding Specificity:	C-Term
Reactivity:	Human
Host:	Rabbit
Clonality:	Polyclonal
Conjugate:	This TADA2L antibody is un-conjugated
Application:	Western Blotting (WB)

Product Details

Immunogen:	TADA2 L antibody was raised in rabbit using the C terminal of TADA2 as the immunogen
Purification:	Purified

Target Details

Target:	TADA2L (TADA2A)
Alternative Name:	TADA2L (TADA2A Products)
Background:	Many DNA-binding transcriptional activator proteins enhance the initiation rate of RNA polymerase II-mediated gene transcription by interacting functionally with the general transcription machinery bound at the basal promoter. Adaptor proteins are usually required for this activation, possibly to acetylate and destabilize nucleosomes, thereby relieving chromatin constraints at the promoter. TADA2L is a transcriptional activator adaptor and has been found

Target Details

to be part of the PCAF histone acetylase complex. Synonyms: Polyclonal TADA2L antibody, Anti-TADA2L antibody, transcriptional adaptor 2A antibody, ADA2 antibody, ADA2A antibody, FLJ12705 antibody, KL04P antibody, TADA2L antibody, hADA2 antibody.

Pathways: [Chromatin Binding](#)

Application Details

Application Notes: WB: 0.2-1 µg/mL
Optimal conditions should be determined by the investigator.

Comment: TADA2L Blocking Peptide, catalog no. 33R-8153, is also available for use as a blocking control in assays to test for specificity of this TADA2L antibody

Restrictions: For Research Use only

Handling

Format: Lyophilized

Concentration: Lot specific

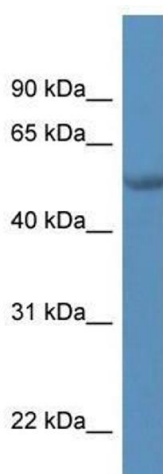
Buffer: Lyophilized powder. Add 50 µL of distilled water. Final antibody concentration is 1 mg/mL in PBS buffer.

Handling Advice: Avoid repeated freeze/thaw cycles.

Storage: 4 °C/-20 °C

Storage Comment: Store at 4 °C, following reconstitution, aliquot and store at -20 °C.

Images



Western Blotting

Image 1. TADA2L antibody used at 2.5 ug/ml to detect target protein.