

Datasheet for ABIN927446 **anti-KDM6A antibody (N-Term)**



[Go to Product page](#)

1 Image

Overview

Quantity:	100 µL
Target:	KDM6A
Binding Specificity:	N-Term
Reactivity:	Human, Mouse
Host:	Rabbit
Clonality:	Polyclonal
Conjugate:	This KDM6A antibody is un-conjugated
Application:	Western Blotting (WB)

Product Details

Immunogen:	Utx antibody was raised in rabbit using the N terminal of Utx as the immunogen
Cross-Reactivity:	Mouse (Murine)
Purification:	Purified

Target Details

Target:	KDM6A
Alternative Name:	Utx (KDM6A Products)
Background:	The function of this protein remains unknown. Synonyms: Polyclonal Utx antibody, Anti-Utx antibody, lysine, K-specific demethylase 6A antibody, Utx antibody.
Pathways:	Tube Formation, Warburg Effect

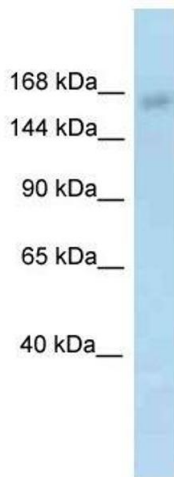
Application Details

Application Notes:	Optimal conditions should be determined by the investigator.
Comment:	Utx Blocking Peptide, catalog no. 33R-10306, is also available for use as a blocking control in assays to test for specificity of this Utx antibody
Restrictions:	For Research Use only

Handling

Format:	Lyophilized
Concentration:	Lot specific
Buffer:	Lyophilized powder. Add 50 μ L of distilled water. Final antibody concentration is 1 mg/mL in PBS buffer.
Handling Advice:	Avoid repeated freeze/thaw cycles.
Storage:	4 °C/-20 °C
Storage Comment:	Store at 4 °C, following reconstitution, aliquot and store at -20 °C.

Images



Western Blotting

Image 1. Western Blot showing Utx antibody used at a concentration of 1.0 μ g/ml against Mouse Intestine Lysate