

Datasheet for ABIN927447
anti-WHSC1 antibody (N-Term)



[Go to Product page](#)

1 Image

Overview

Quantity:	100 µL
Target:	WHSC1
Binding Specificity:	N-Term
Reactivity:	Human, Mouse, Rat, Chicken
Host:	Rabbit
Clonality:	Polyclonal
Conjugate:	This WHSC1 antibody is un-conjugated
Application:	Western Blotting (WB)

Product Details

Immunogen:	WHSC1 antibody was raised in rabbit using the N terminal of WHSC1 as the immunogen
Cross-Reactivity:	Mouse (Murine), Rat (Rattus), Chicken
Purification:	Purified

Target Details

Target:	WHSC1
Alternative Name:	WHSC1 (WHSC1 Products)
Background:	WHSC1 encodes a protein that contains four domains present in other developmental proteins: a PWWP domain, an HMG box, a SET domain, and a PHD-type zinc finger. It is expressed ubiquitously in early development. Wolf-Hirschhorn syndrome (WHS) is a malformation syndrome associated with a hemizygous deletion of the distal short arm of chromosome 4.

Target Details

Synonyms: Polyclonal WHSC1 antibody, Anti-WHSC1 antibody, Wolf-Hirschhorn syndrome candidate 1 antibody.

Pathways: [SARS-CoV-2 Protein Interactome](#)

Application Details

Application Notes: WB: 0.2-1 µg/mL
Optimal conditions should be determined by the investigator.

Comment: WHSC1 Blocking Peptide, catalog no. 33R-4748, is also available for use as a blocking control in assays to test for specificity of this WHSC1 antibody

Restrictions: For Research Use only

Handling

Format: Lyophilized

Concentration: Lot specific

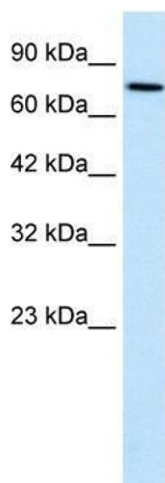
Buffer: Lyophilized powder. Add 50 µL of distilled water. Final antibody concentration is 1 mg/mL in PBS buffer.

Handling Advice: Avoid repeated freeze/thaw cycles.

Storage: 4 °C/-20 °C

Storage Comment: Store at 4 °C, following reconstitution, aliquot and store at -20 °C.

Images



Western Blotting

Image 1. WHSC1 antibody used at 1.25 µg/ml to detect target protein.