

Datasheet for ABIN927448

anti-ZBTB14/ZFP161 antibody (Middle Region)[Go to Product page](#)**1** Image

Overview

Quantity:	100 µL
Target:	ZBTB14/ZFP161 (ZFP161)
Binding Specificity:	Middle Region
Reactivity:	Human, Mouse
Host:	Rabbit
Clonality:	Polyclonal
Conjugate:	This ZBTB14/ZFP161 antibody is un-conjugated
Application:	Western Blotting (WB)

Product Details

Immunogen:	Zfp161 antibody was raised in rabbit using the middle region of Zfp161 as the immunogen
Cross-Reactivity:	Mouse (Murine)
Purification:	Purified

Target Details

Target:	ZBTB14/ZFP161 (ZFP161)
Alternative Name:	Zfp161 (ZFP161 Products)
Background:	Zfp161 is a transcriptional repressor of MYC and thymidine kinase promoters. Synonyms: Polyclonal Zfp161 antibody, Anti-Zfp161 antibody, zinc finger protein 161 antibody, ZF5 antibody.

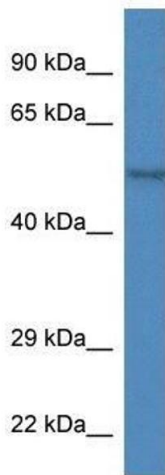
Application Details

Application Notes:	Optimal conditions should be determined by the investigator.
Comment:	Zfp161 Blocking Peptide, catalog no. 33R-1877, is also available for use as a blocking control in assays to test for specificity of this Zfp161 antibody
Restrictions:	For Research Use only

Handling

Format:	Lyophilized
Concentration:	Lot specific
Buffer:	Lyophilized powder. Add 50 μ L of distilled water. Final antibody concentration is 1 mg/mL in PBS buffer.
Handling Advice:	Avoid repeated freeze/thaw cycles.
Storage:	4 °C/-20 °C
Storage Comment:	Store at 4 °C, following reconstitution, aliquot and store at -20 °C.

Images



Western Blotting

Image 1. Western Blot showing Zfp161 antibody used at a concentration of 1.0 ug/ml against Mouse Heart Lysate