

Datasheet for ABIN927450
anti-ZNF182 antibody (Middle Region)



[Go to Product page](#)

2 Images

Overview

Quantity:	100 µL
Target:	ZNF182
Binding Specificity:	Middle Region
Reactivity:	Human, Dog, Mouse, Cow, Rat, Zebrafish (Danio rerio)
Host:	Rabbit
Clonality:	Polyclonal
Conjugate:	This ZNF182 antibody is un-conjugated
Application:	Western Blotting (WB), Immunohistochemistry (IHC)

Product Details

Immunogen:	ZNF21 antibody was raised in rabbit using the middle region of ZNF21 as the immunogen
Cross-Reactivity:	Mouse (Murine), Dog (Canine), Rat (Rattus), Cow (Bovine), Zebrafish (Brachydanio rerio)
Purification:	Purified

Target Details

Target:	ZNF182
Alternative Name:	ZNF21 (ZNF182 Products)
Background:	Located on chromosome X, ZNF21 encodes a zinc finger protein 21. Synonyms: Polyclonal ZNF21 antibody, Anti-ZNF21 antibody.

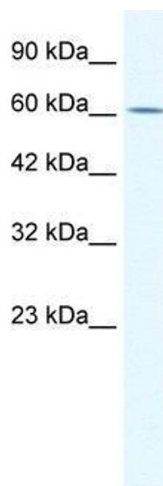
Application Details

Application Notes:	WB: 0.2-1 µg/mL Optimal conditions should be determined by the investigator.
Comment:	ZNF21 Blocking Peptide, catalog no. 33R-8225, is also available for use as a blocking control in assays to test for specificity of this ZNF21 antibody
Restrictions:	For Research Use only

Handling

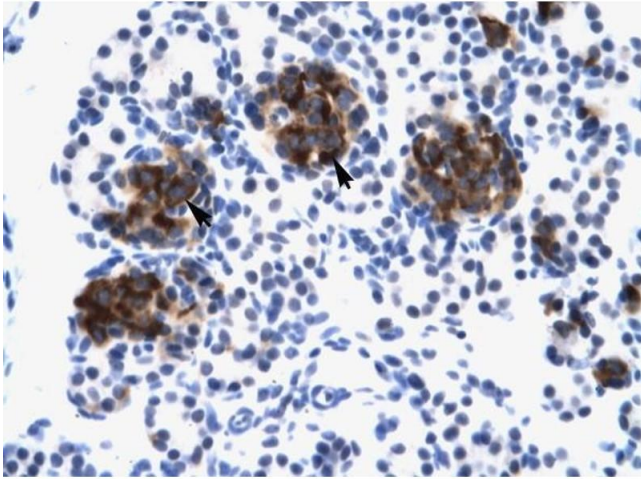
Format:	Lyophilized
Concentration:	Lot specific
Buffer:	Lyophilized powder. Add 50 µL of distilled water. Final antibody concentration is 1 mg/mL in PBS buffer.
Handling Advice:	Avoid repeated freeze/thaw cycles.
Storage:	4 °C/-20 °C
Storage Comment:	Store at 4 °C, following reconstitution, aliquot and store at -20 °C.

Images



Western Blotting

Image 1. ZNF21 antibody used at 1.25 µg/ml to detect target protein.



Immunohistochemistry

Image 2. ZNF21 antibody was used for immunohistochemistry at a concentration of 4-8 ug/ml to stain Epithelial cells of pancreatic acinus (Indicated with Arrows) in Human Pancreas. Magnification is at