

Datasheet for ABIN927453  
**anti-SNIP1 antibody (Middle Region)**



[Go to Product page](#)

1 Image

## Overview

Quantity:	100 µL
Target:	SNIP1
Binding Specificity:	Middle Region
Reactivity:	Human, Rat, Mouse, Cow, Dog
Host:	Rabbit
Clonality:	Polyclonal
Conjugate:	This SNIP1 antibody is un-conjugated
Application:	Western Blotting (WB)

## Product Details

Immunogen:	SNIP1 antibody was raised in rabbit using the middle region of SNIP1 as the immunogen
Cross-Reactivity:	Mouse (Murine), Rat (Rattus), Cow (Bovine), Dog (Canine)
Purification:	Purified

## Target Details

Target:	SNIP1
Alternative Name:	SNIP1 ( <a href="#">SNIP1 Products</a> )
Background:	Smad-binding peptide aptamers can be developed to selectively inhibit TGF-beta-induced gene expression. Synonyms: Polyclonal SNIP1 antibody, Anti-SNIP1 antibody, Smad nuclear interacting protein 1 antibody.

## Target Details

Pathways: [SARS-CoV-2 Protein Interactome](#), [The Global Phosphorylation Landscape of SARS-CoV-2 Infection](#)

## Application Details

Application Notes: WB: 0.2-1 µg/mL  
Optimal conditions should be determined by the investigator.

Comment: SNIP1 Blocking Peptide, catalog no. 33R-8075, is also available for use as a blocking control in assays to test for specificity of this SNIP1 antibody

Restrictions: For Research Use only

## Handling

Format: Lyophilized

Concentration: Lot specific

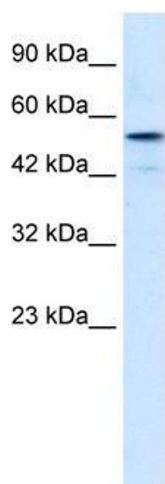
Buffer: Lyophilized powder. Add 50 µL of distilled water. Final antibody concentration is 1 mg/mL in PBS buffer.

Handling Advice: Avoid repeated freeze/thaw cycles.

Storage: 4 °C/-20 °C

Storage Comment: Store at 4 °C, following reconstitution, aliquot and store at -20 °C.

## Images



### Western Blotting

**Image 1.** SNIP1 antibody used at 0.2-1 ug/ml to detect target protein.