

Datasheet for ABIN927457  
**anti-CBLL1 antibody (N-Term)**



[Go to Product page](#)

1 Image

## Overview

|                      |  |
|----------------------|--|
| Quantity:            | 100 µL                                     |
| Target:              | CBLL1                                      |
| Binding Specificity: | N-Term                                     |
| Reactivity:          | Human, Mouse, Rat, Chicken, Xenopus laevis |
| Host:                | Rabbit                                     |
| Clonality:           | Polyclonal                                 |
| Conjugate:           | This CBLL1 antibody is un-conjugated       |
| Application:         | Western Blotting (WB)                      |

## Product Details

|                   |  |
|-------------------|--|
| Immunogen:        | CBLL1 antibody was raised in rabbit using the N terminal of CBLL1 as the immunogen |
| Cross-Reactivity: | Mouse (Murine), Rat (Rattus), Chicken, Frog  |
| Purification:     | Purified   |

## Target Details

|                   |  |
|-------------------|--|
| Target:           | CBLL1  |
| Alternative Name: | CBLL1 ( <a href="#">CBLL1 Products</a> )   |
| Background:       | Epithelial cell cadherin is endocytosed as a consequence of tyrosine phosphorylation and ubiquitination. CBLL1 is an E3 ubiquitin ligase that mediates ubiquitination of the CDH1 complex. Synonyms: Polyclonal CBLL1 antibody, Anti-CBLL1 antibody, Cas-Br-M, murine ecotropic retroviral transforming sequence-like 1 antibody, FLJ23109 antibody, HAKAI antibody, |

## Target Details

---

MGC163401 antibody, MGC163403 antibody, RNF188 antibody.

## Application Details

---

|                    |  |
|--------------------|--|
| Application Notes: | WB: 0.2-1 µg/mL<br>Optimal conditions should be determined by the investigator.  |
| Comment:           | CBLL1 Blocking Peptide, catalog no. 33R-5838, is also available for use as a blocking control in assays to test for specificity of this CBLL1 antibody |
| Restrictions:      | For Research Use only  |

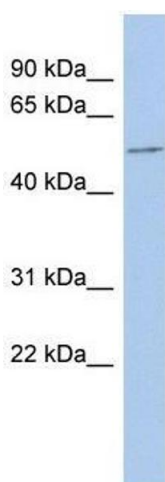
## Handling

---

|                  |  |
|------------------|--|
| Format:          | Lyophilized  |
| Concentration:   | Lot specific   |
| Buffer:          | Lyophilized powder. Add 50 µL of distilled water. Final antibody concentration is 1 mg/mL in PBS buffer. |
| Handling Advice: | Avoid repeated freeze/thaw cycles.   |
| Storage:         | 4 °C/-20 °C  |
| Storage Comment: | Store at 4 °C, following reconstitution, aliquot and store at -20 °C.                                    |

## Images

---



### Western Blotting

**Image 1.** CBLL1 antibody used at 1.25 µg/ml to detect target protein.