

Datasheet for ABIN927459
anti-AP3B1 antibody (N-Term)



[Go to Product page](#)

1 Image

Overview

Quantity:	100 µL
Target:	AP3B1
Binding Specificity:	N-Term
Reactivity:	Human, Rat
Host:	Rabbit
Clonality:	Polyclonal
Conjugate:	This AP3B1 antibody is un-conjugated
Application:	Western Blotting (WB)

Product Details

Immunogen:	Ap3 b1 antibody was raised in rabbit using the N terminal of Ap3 1 as the immunogen
Cross-Reactivity:	Rat (Rattus)
Purification:	Purified

Target Details

Target:	AP3B1
Alternative Name:	Ap3b1 (AP3B1 Products)
Background:	The function of Ap3b1 remains unknown. Synonyms: Polyclonal Ap3b1 antibody, Anti-Ap3b1 antibody, adaptor-related protein complex 3, beta 1 subunit antibody, Ap3b1 antibody.
Pathways:	SARS-CoV-2 Protein Interactome

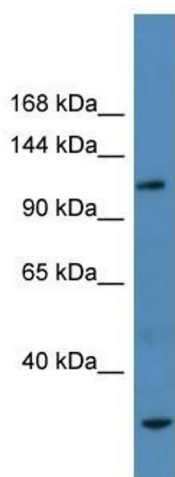
Application Details

Application Notes:	WB: 0.2-1 µg/mL Optimal conditions should be determined by the investigator.
Comment:	Ap3b1 Blocking Peptide, catalog no. 33R-6503, is also available for use as a blocking control in assays to test for specificity of this Ap3b1 antibody
Restrictions:	For Research Use only

Handling

Format:	Lyophilized
Concentration:	Lot specific
Buffer:	Lyophilized powder. Add 50 µL of distilled water. Final antibody concentration is 1 mg/mL in PBS buffer.
Handling Advice:	Avoid repeated freeze/thaw cycles.
Storage:	4 °C/-20 °C
Storage Comment:	Store at 4 °C, following reconstitution, aliquot and store at -20 °C.

Images



Western Blotting

Image 1. Ap3b1 antibody used at 2.5 ug/ml to detect target protein.