

Datasheet for ABIN927467
anti-EVI2A antibody (C-Term)



[Go to Product page](#)

1 Image

Overview

Quantity:	100 µL
Target:	EVI2A
Binding Specificity:	C-Term
Reactivity:	Human
Host:	Rabbit
Clonality:	Polyclonal
Conjugate:	This EVI2A antibody is un-conjugated
Application:	Western Blotting (WB)

Product Details

Immunogen:	EVI2 A antibody was raised in rabbit using the C terminal of EVI2 as the immunogen
Purification:	Purified

Target Details

Target:	EVI2A
Alternative Name:	EVI2A (EVI2A Products)
Background:	EVI2A may complex with itself or/and other proteins within the membrane, to function as part of a cell-surface receptor. Synonyms: Polyclonal EVI2A antibody, Anti-EVI2A antibody, ecotropic viral integration site 2A antibody, EVDA antibody, EVI2 antibody.

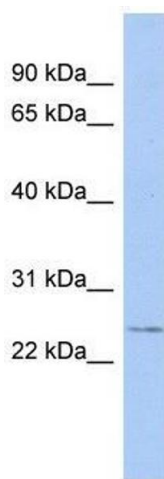
Application Details

Application Notes:	WB: 0.2-1 µg/mL Optimal conditions should be determined by the investigator.
Comment:	EVI2A Blocking Peptide, catalog no. 33R-5464, is also available for use as a blocking control in assays to test for specificity of this EVI2A antibody
Restrictions:	For Research Use only

Handling

Format:	Lyophilized
Concentration:	Lot specific
Buffer:	Lyophilized powder. Add 50 µL of distilled water. Final antibody concentration is 1 mg/mL in PBS buffer.
Handling Advice:	Avoid repeated freeze/thaw cycles.
Storage:	4 °C/-20 °C
Storage Comment:	Store at 4 °C, following reconstitution, aliquot and store at -20 °C.

Images



Western Blotting

Image 1. EVI2A antibody used at 0.625 µg/ml to detect target protein.