

Datasheet for ABIN927473 **anti-PREB antibody (N-Term)**

2 Images



[Go to Product page](#)

Overview

Quantity:	100 µL
Target:	PREB
Binding Specificity:	N-Term
Reactivity:	Human, Mouse, Rat, Cow, Dog
Host:	Rabbit
Clonality:	Polyclonal
Conjugate:	This PREB antibody is un-conjugated
Application:	Western Blotting (WB), Immunohistochemistry (IHC)

Product Details

Immunogen:	PREB antibody was raised in rabbit using the N terminal of PREB as the immunogen
Cross-Reactivity:	Mouse (Murine), Rat (Rattus), Dog (Canine), Cow (Bovine)
Purification:	Purified

Target Details

Target:	PREB
Alternative Name:	PREB (PREB Products)
Background:	<p>PREB encodes a protein that specifically binds to a Pit1-binding element of the prolactin (PRL) promoter. This protein may act as a transcriptional regulator and is thought to be involved in some of the developmental abnormalities observed in patients with partial trisomy 2p.</p> <p>Synonyms: Polyclonal PREB antibody, Anti-PREB antibody, prolactin regulatory element binding</p>

Target Details

antibody.

Pathways: [ER-Nucleus Signaling](#)

Application Details

Application Notes: WB: 0.2-1 µg/mL
Optimal conditions should be determined by the investigator.

Comment: PREB Blocking Peptide, catalog no. 33R-8243, is also available for use as a blocking control in assays to test for specificity of this PREB antibody

Restrictions: For Research Use only

Handling

Format: Lyophilized

Concentration: Lot specific

Buffer: Lyophilized powder. Add 50 µL of distilled water. Final antibody concentration is 1 mg/mL in PBS buffer.

Handling Advice: Avoid repeated freeze/thaw cycles.

Storage: 4 °C/-20 °C

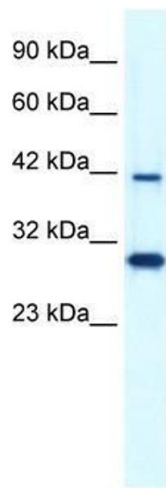
Storage Comment: Store at 4 °C, following reconstitution, aliquot and store at -20 °C.

Images



Immunohistochemistry

Image 1. PREB antibody was used for immunohistochemistry at a concentration of 4-8 µg/ml to stain Myocardial cells (arrows) in Human Heart. Magnification is at 400X



Western Blotting

Image 2. PREB antibody used at 1.25 ug/ml to detect target protein.