

Datasheet for ABIN927474  
**anti-TRIM13 antibody (Middle Region)**



[Go to Product page](#)

3 Images

### Overview

Quantity:	100 µL
Target:	TRIM13
Binding Specificity:	Middle Region
Reactivity:	Human, Mouse, Rat, Cow
Host:	Rabbit
Clonality:	Polyclonal
Conjugate:	This TRIM13 antibody is un-conjugated
Application:	Western Blotting (WB), Immunohistochemistry (IHC)

### Product Details

Immunogen:	RFP2 antibody was raised in rabbit using the middle region of RFP2 as the immunogen
Cross-Reactivity:	Rat (Rattus), Mouse (Murine), Cow (Bovine)
Purification:	Purified

### Target Details

Target:	TRIM13
Alternative Name:	<a href="#">RFP2 (TRIM13 Products)</a>
Background:	The protein encoded by the RFP2 gene is a member of the tripartite motif (TRIM) family. The TRIM motif includes three zinc-binding domains, a RING, a B-box type 1 and a B-box type 2, and a coiled-coil region. The protein localizes to cytoplasmic bodies near the nucleus, but its function is unknown. The gene is located on chromosome 13 within the minimal deletion region

## Target Details

for B-cell chronic lymphocytic leukemia. Synonyms: Polyclonal RFP2 antibody, Anti-RFP2 antibody.

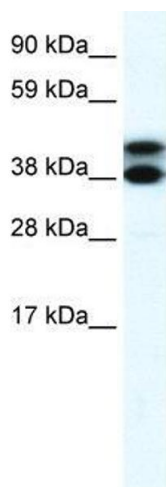
## Application Details

Application Notes:	WB: 0.125 µg/mL Optimal conditions should be determined by the investigator.
Comment:	RFP2 Blocking Peptide, catalog no. 33R-2197, is also available for use as a blocking control in assays to test for specificity of this RFP2 antibody
Restrictions:	For Research Use only

## Handling

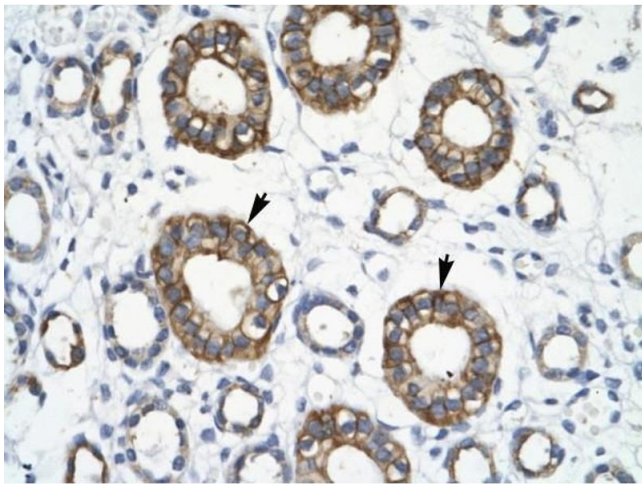
Format:	Lyophilized
Concentration:	Lot specific
Buffer:	Lyophilized powder. Add 50 µL of distilled water. Final antibody concentration is 1 mg/mL in PBS buffer.
Handling Advice:	Avoid repeated freeze/thaw cycles.
Storage:	4 °C/-20 °C
Storage Comment:	Store at 4 °C, following reconstitution, aliquot and store at -20 °C.

## Images



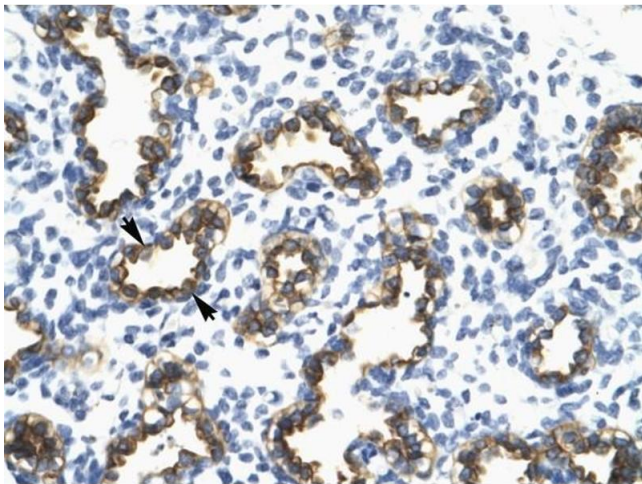
### Western Blotting

**Image 1.** RFP2 antibody used at 2.5 µg/ml to detect target protein.



#### Immunohistochemistry

**Image 2.** RFP2 antibody was used for immunohistochemistry at a concentration of 4-8 ug/ml to stain Epithelial cells of collecting tubule (arrows) in Human Kidney. Magnification is at 400X



#### Immunohistochemistry

**Image 3.** RFP2 antibody was used for immunohistochemistry at a concentration of 4-8 ug/ml to stain Alveolar cells (arrows) in Human Lung. Magnification is at 400X.