

Datasheet for ABIN927475

**anti-SMARCB1 antibody (N-Term)****2** Images[Go to Product page](#)

## Overview

Quantity:	100 µL
Target:	SMARCB1
Binding Specificity:	N-Term
Reactivity:	Human, Mouse, Cow, Dog, Xenopus laevis
Host:	Rabbit
Clonality:	Polyclonal
Conjugate:	This SMARCB1 antibody is un-conjugated
Application:	Western Blotting (WB), Immunohistochemistry (IHC)

## Product Details

Immunogen:	SMARCB1 antibody was raised in rabbit using the N terminal of SMARCB1 as the immunogen
Cross-Reactivity:	Mouse (Murine), Dog (Canine), Cow (Bovine), Frog
Purification:	Purified

## Target Details

Target:	SMARCB1
Alternative Name:	SMARCB1 ( <a href="#">SMARCB1 Products</a> )
Background:	The protein encoded by SMARCB1 is part of a complex that relieves repressive chromatin structures, allowing the transcriptional machinery to access its targets more effectively. The encoded nuclear protein may also bind to and enhance the DNA joining activity of HIV-1 integrase. SMARCB1 has been found to be a tumor suppressor, and mutations in it have been

## Target Details

associated with malignant rhabdoid tumors. Synonyms: Polyclonal SMARCB1 antibody, Anti-SMARCB1 antibody, SWI/SNF related, matrix associated, actin dependent regulator of chromatin, subfamily b, member 1 antibody.

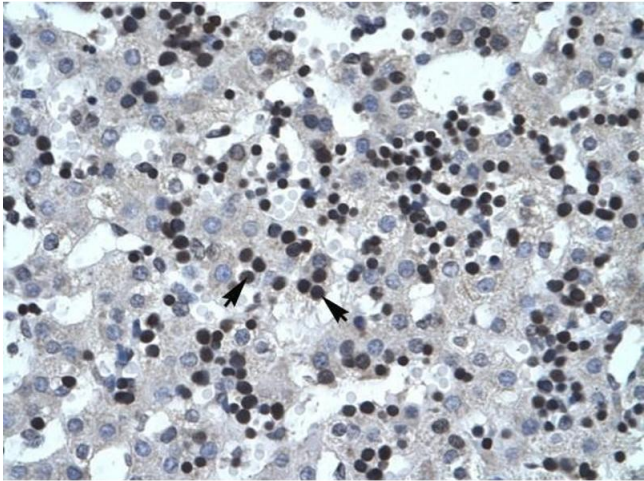
## Application Details

Application Notes:	WB: 0.2-1 µg/mL Optimal conditions should be determined by the investigator.
Comment:	SMARCB1 Blocking Peptide, catalog no. 33R-7940, is also available for use as a blocking control in assays to test for specificity of this SMARCB1 antibody
Restrictions:	For Research Use only

## Handling

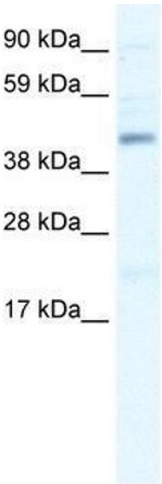
Format:	Lyophilized
Concentration:	Lot specific
Buffer:	Lyophilized powder. Add 50 µL of distilled water. Final antibody concentration is 1 mg/mL in PBS buffer.
Handling Advice:	Avoid repeated freeze/thaw cycles.
Storage:	4 °C/-20 °C
Storage Comment:	Store at 4 °C, following reconstitution, aliquot and store at -20 °C.

## Images



### Immunohistochemistry

**Image 1.** SMARCB1 antibody was used for immunohistochemistry at a concentration of 4-8 ug/ml to stain Liver cells (arrows) in Human Liver. Magnification is at 400X



Western Blotting

**Image 2.** SMARCB1 antibody used at 1.25 ug/ml to detect target protein.