

Datasheet for ABIN927477  
**anti-TIMELESS antibody (N-Term)**



[Go to Product page](#)

2 Images

## Overview

Quantity:	100 µL
Target:	TIMELESS
Binding Specificity:	N-Term
Reactivity:	Human, Mouse, Rat, Dog, Cow
Host:	Rabbit
Clonality:	Polyclonal
Conjugate:	This TIMELESS antibody is un-conjugated
Application:	Western Blotting (WB), Immunohistochemistry (IHC)

## Product Details

Immunogen:	TIMELESS antibody was raised in rabbit using the N terminal of TIMELESS as the immunogen
Cross-Reactivity:	Mouse (Murine), Rat (Rattus), Cow (Bovine), Dog (Canine)
Purification:	Purified

## Target Details

Target:	TIMELESS
Alternative Name:	TIMELESS ( <a href="#">TIMELESS Products</a> )
Background:	The human Timeless protein interacts with both the circadian clock protein cryptochrome 2 and with the cell cycle checkpoint proteins Chk1 and the ATR-ATRIP complex and plays an important role in the DNA damage checkpoint response. Down-regulation of Timeless in human cells seriously compromises replication and intra-S checkpoints, indicating an intimate

## Target Details

connection between the circadian cycle and the DNA damage checkpoints that is in part mediated by the Timeless protein. Synonyms: Polyclonal TIMELESS antibody, Anti-TIMELESS antibody, timeless homolog, Drosophila antibody.

Pathways: [Protein targeting to Nucleus](#), [Photoperiodism](#)

## Application Details

Application Notes: WB: 0.2-1 µg/mL  
Optimal conditions should be determined by the investigator.

Comment: TIMELESS Blocking Peptide, catalog no. 33R-3969, is also available for use as a blocking control in assays to test for specificity of this TIMELESS antibody

Restrictions: For Research Use only

## Handling

Format: Lyophilized

Concentration: Lot specific

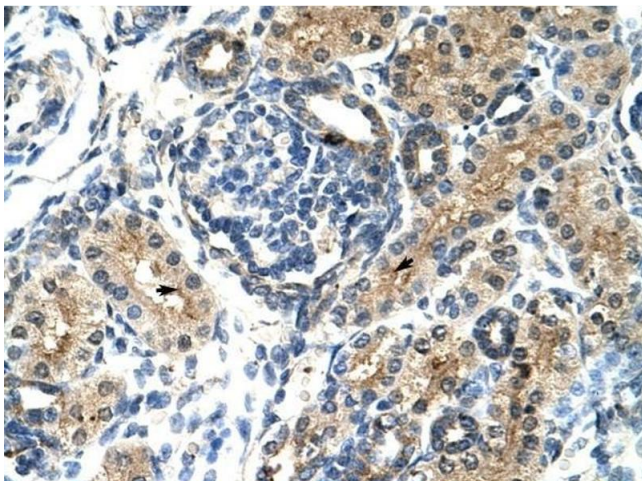
Buffer: Lyophilized powder. Add 50 µL of distilled water. Final antibody concentration is 1 mg/mL in PBS buffer.

Handling Advice: Avoid repeated freeze/thaw cycles.

Storage: 4 °C/-20 °C

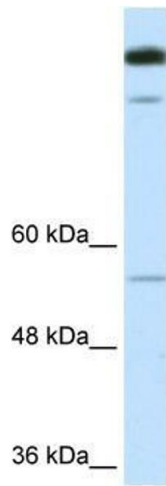
Storage Comment: Store at 4 °C, following reconstitution, aliquot and store at -20 °C.

## Images



### Immunohistochemistry

**Image 1.** TIMELESS antibody was used for immunohistochemistry at a concentration of 4-8 µg/ml to stain Epithelial cells of renal tubule (arrows) in Human Kidney. Magnification is at 400X



### Western Blotting

**Image 2.** TIMELESS antibody used at 1.25 ug/ml to detect target protein.