

Datasheet for ABIN927482
anti-SAP30BP antibody (C-Term)



[Go to Product page](#)

1 Image

Overview

Quantity:	100 µL
Target:	SAP30BP
Binding Specificity:	C-Term
Reactivity:	Human, Mouse, Rat, Cow, Zebrafish (Danio rerio), Xenopus laevis, Chicken
Host:	Rabbit
Clonality:	Polyclonal
Conjugate:	This SAP30BP antibody is un-conjugated
Application:	Western Blotting (WB)

Product Details

Immunogen:	SAP30 BP antibody was raised in rabbit using the C terminal of SAP30 P as the immunogen
Cross-Reactivity:	Mouse (Murine), Rat (Rattus), Cow (Bovine), Zebrafish (Brachydanio rerio), Frog, Chicken
Purification:	Purified

Target Details

Target:	SAP30BP
Alternative Name:	SAP30BP (SAP30BP Products)
Background:	SAP30BP expressed as a fusion polypeptide with a fluorescent protein in the nucleus of HeLa cells. SAP30BP induces cell death. The interaction of SAP30BP with SAP30 in its conserved domain implies that this protein family, as the products of immediate-early genes, comprise functional molecules involved in the transcriptional regulation of cells, which might be related to

Target Details

the inhibition of some cell survival genes. SAP30BP may also be involved in the regulation of beta-2-microglobulin genes. Synonyms: Polyclonal SAP30BP antibody, Anti-SAP30BP antibody, SAP30 binding protein antibody.

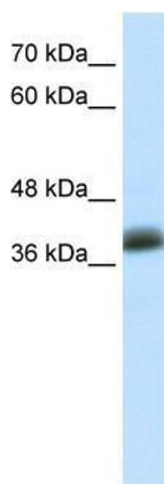
Application Details

Application Notes:	WB: 0.2-1 µg/mL Optimal conditions should be determined by the investigator.
Comment:	SAP30BP Blocking Peptide, catalog no. 33R-10010, is also available for use as a blocking control in assays to test for specificity of this SAP30BP antibody
Restrictions:	For Research Use only

Handling

Format:	Lyophilized
Concentration:	Lot specific
Buffer:	Lyophilized powder. Add 50 µL of distilled water. Final antibody concentration is 1 mg/mL in PBS buffer.
Handling Advice:	Avoid repeated freeze/thaw cycles.
Storage:	4 °C/-20 °C
Storage Comment:	Store at 4 °C, following reconstitution, aliquot and store at -20 °C.

Images



Western Blotting

Image 1. SAP30BP antibody used at 5 µg/ml to detect target protein.