

Datasheet for ABIN927490
anti-DPF1 antibody (Middle Region)



[Go to Product page](#)

1 Image

Overview

Quantity:	100 µL
Target:	DPF1
Binding Specificity:	Middle Region
Reactivity:	Human, Mouse, Rat, Cow, Dog
Host:	Rabbit
Clonality:	Polyclonal
Conjugate:	This DPF1 antibody is un-conjugated
Application:	Western Blotting (WB)

Product Details

Immunogen:	DPF1 antibody was raised in rabbit using the middle region of DPF1 as the immunogen
Cross-Reactivity:	Mouse (Murine), Rat (Rattus), Dog (Canine), Cow (Bovine)
Purification:	Purified

Target Details

Target:	DPF1
Alternative Name:	DPF1 (DPF1 Products)
Background:	Part of the d4 family of zinc finger proteins, DPF1 has been localized on chromosome 19. Synonyms: Polyclonal DPF1 antibody, Anti-DPF1 antibody, D4, zinc and double PHD fingers family 1 antibody.

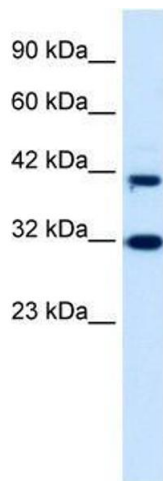
Application Details

Application Notes:	WB: 0.2-1 µg/mL Optimal conditions should be determined by the investigator.
Comment:	DPF1 Blocking Peptide, catalog no. 33R-4344, is also available for use as a blocking control in assays to test for specificity of this DPF1 antibody
Restrictions:	For Research Use only

Handling

Format:	Lyophilized
Concentration:	Lot specific
Buffer:	Lyophilized powder. Add 50 µL of distilled water. Final antibody concentration is 1 mg/mL in PBS buffer.
Handling Advice:	Avoid repeated freeze/thaw cycles.
Storage:	4 °C/-20 °C
Storage Comment:	Store at 4 °C, following reconstitution, aliquot and store at -20 °C.

Images



Western Blotting

Image 1. DPF1 antibody used at 0.625 µg/ml to detect target protein.