

Datasheet for ABIN927492
anti-SMARCA2 antibody (Middle Region)



[Go to Product page](#)

2 Images

Overview

Quantity:	100 µL
Target:	SMARCA2
Binding Specificity:	Middle Region
Reactivity:	Human, Mouse, Rat, Cow, Dog, Chicken, Zebrafish (Danio rerio), Xenopus laevis
Host:	Rabbit
Clonality:	Polyclonal
Conjugate:	This SMARCA2 antibody is un-conjugated
Application:	Western Blotting (WB), Immunohistochemistry (IHC)

Product Details

Immunogen:	SMARCA2 antibody was raised in rabbit using the middle region of SMARCA2 as the immunogen
Cross-Reactivity:	Mouse (Murine), Rat (Rattus), Dog (Canine), Zebrafish (Brachydanio rerio), Cow (Bovine), Frog, Chicken
Purification:	Purified

Target Details

Target:	SMARCA2
Alternative Name:	SMARCA2 (SMARCA2 Products)
Background:	SMARCA2 is a member of the SWI/SNF family of proteins and is highly similar to the brahma protein of Drosophila. Members of this family have helicase and ATPase activities and are

Target Details

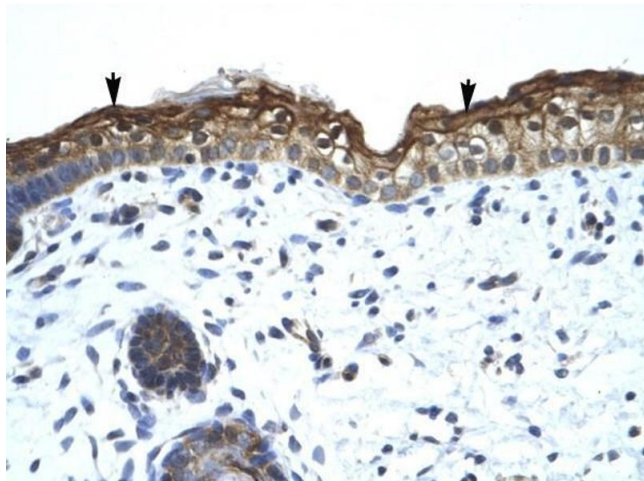
thought to regulate transcription of certain genes by altering the chromatin structure around those genes. The encoded protein is part of the large ATP-dependent chromatin remodeling complex SNF/SWI, which is required for transcriptional activation of genes normally repressed by chromatin. Two transcript variants encoding different isoforms have been found for this gene, which contains a trinucleotide repeat (CAG) length polymorphism. Synonyms: Polyclonal SMARCA2 antibody, Anti-SMARCA2 antibody, SWI/SNF related, matrix associated, actin dependent regulator of chromatin, subfamily a, member 2 antibody.

Application Details

Application Notes:	WB: 0.2-1 µg/mL Optimal conditions should be determined by the investigator.
Comment:	SMARCA2 Blocking Peptide, catalog no. 33R-9606, is also available for use as a blocking control in assays to test for specificity of this SMARCA2 antibody
Restrictions:	For Research Use only

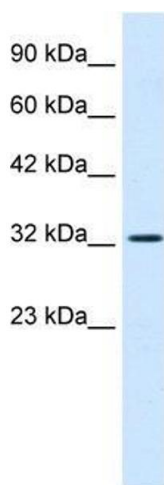
Handling

Format:	Lyophilized
Concentration:	Lot specific
Buffer:	Lyophilized powder. Add 50 µL of distilled water. Final antibody concentration is 1 mg/mL in PBS buffer.
Handling Advice:	Avoid repeated freeze/thaw cycles.
Storage:	4 °C/-20 °C
Storage Comment:	Store at 4 °C, following reconstitution, aliquot and store at -20 °C.



Immunohistochemistry

Image 1. SMARCA2 antibody was used for immunohistochemistry at a concentration of 4-8 ug/ml to stain Squamous epithelial cells (arrows) in Human Skin. Magnification is at 400X



Western Blotting

Image 2. SMARCA2 antibody used at 0.125 ug/ml to detect target protein.