

Datasheet for ABIN927493
anti-C19orf25 antibody (N-Term)



[Go to Product page](#)

1 Image

Overview

Quantity:	100 µL
Target:	C19orf25
Binding Specificity:	N-Term
Reactivity:	Cow, Human, Mouse, Rat, Dog
Host:	Rabbit
Clonality:	Polyclonal
Conjugate:	This C19orf25 antibody is un-conjugated
Application:	Western Blotting (WB)

Product Details

Immunogen:	C19 orf25 antibody was raised in rabbit using the n terminal of C19 RF25 as the immunogen
Cross-Reactivity:	Mouse (Murine), Rat (Rattus), Cow (Bovine), Dog (Canine)
Purification:	Purified

Target Details

Target:	C19orf25
Alternative Name:	C19orf25 (C19orf25 Products)
Background:	The specific function of the protein remains unknown. Synonyms: Polyclonal C19orf25 antibody, Anti-C19orf25 antibody.

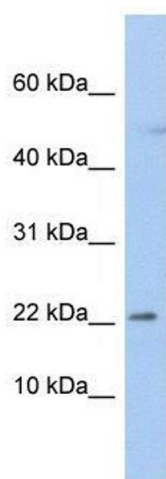
Application Details

Application Notes:	WB: 0.2-1 µg/mL Optimal conditions should be determined by the investigator.
Comment:	C19orf25 Blocking Peptide, catalog no. 33R-6076, is also available for use as a blocking control in assays to test for specificity of this C19orf25 antibody
Restrictions:	For Research Use only

Handling

Format:	Lyophilized
Concentration:	Lot specific
Buffer:	Lyophilized powder. Add 50 µL of distilled water. Final antibody concentration is 1 mg/mL in PBS buffer.
Handling Advice:	Avoid repeated freeze/thaw cycles.
Storage:	4 °C/-20 °C
Storage Comment:	Store at 4 °C, following reconstitution, aliquot and store at -20 °C.

Images



Western Blotting

Image 1. C19orf25 antibody used at 1.25 µg/ml to detect target protein.