

Datasheet for ABIN927498
anti-SETD4 antibody (C-Term)



[Go to Product page](#)

1 Image

Overview

Quantity:	100 µL
Target:	SETD4
Binding Specificity:	C-Term
Reactivity:	Human, Mouse, Cow, Rat
Host:	Rabbit
Clonality:	Polyclonal
Conjugate:	This SETD4 antibody is un-conjugated
Application:	Western Blotting (WB)

Product Details

Immunogen:	SETD4 antibody was raised in rabbit using the C terminal of SETD4 as the immunogen
Cross-Reactivity:	Mouse (Murine), Rat (Rattus), Cow (Bovine)
Purification:	Purified

Target Details

Target:	SETD4
Alternative Name:	SETD4 (SETD4 Products)
Background:	SETD4 contains 1 SET domain. The exact function of SETD4 is not known. Synonyms: Polyclonal SETD4 antibody, Anti-SETD4 antibody, SET domain containing 4 antibody, C21orf18 antibody, C21orf27 antibody.

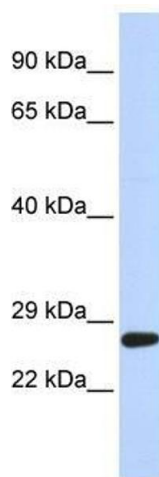
Application Details

Application Notes:	WB: 0.2-1 µg/mL Optimal conditions should be determined by the investigator.
Comment:	SETD4 Blocking Peptide, catalog no. 33R-9765, is also available for use as a blocking control in assays to test for specificity of this SETD4 antibody
Restrictions:	For Research Use only

Handling

Format:	Lyophilized
Concentration:	Lot specific
Buffer:	Lyophilized powder. Add 50 µL of distilled water. Final antibody concentration is 1 mg/mL in PBS buffer.
Handling Advice:	Avoid repeated freeze/thaw cycles.
Storage:	4 °C/-20 °C
Storage Comment:	Store at 4 °C, following reconstitution, aliquot and store at -20 °C.

Images



Western Blotting

Image 1. SETD4 antibody used at 0.2-1 ug/ml to detect target protein.