

Datasheet for ABIN927503  
**anti-TRIM27 antibody (Middle Region)**



[Go to Product page](#)

1 Image

## Overview

Quantity:	100 µL
Target:	TRIM27
Binding Specificity:	Middle Region
Reactivity:	Human, Mouse, Rat, Cow
Host:	Rabbit
Clonality:	Polyclonal
Conjugate:	This TRIM27 antibody is un-conjugated
Application:	Western Blotting (WB)

## Product Details

Immunogen:	TRIM27 antibody was raised in rabbit using the middle region of TRIM27 as the immunogen
Cross-Reactivity:	Mouse (Murine), Rat (Rattus), Cow (Bovine)
Purification:	Purified

## Target Details

Target:	TRIM27
Alternative Name:	TRIM27 ( <a href="#">TRIM27 Products</a> )
Background:	TRIM27 is a member of the tripartite motif (TRIM) family. The TRIM motif includes three zinc-binding domains, a RING, a B-box type 1 and a B-box type 2, and a coiled-coil region. This protein localizes to the nuclear matrix. It interacts with the enhancer of polycomb protein and represses gene transcription. It is also thought to be involved in the differentiation of male germ

## Target Details

cells. Fusion of the N-terminus of this protein with the truncated C-terminus of the RET gene product has been shown to result in production of the ret transforming protein. Synonyms: Polyclonal TRIM27 antibody, Anti-TRIM27 antibody, tripartite motif-containing 27 antibody, RFP antibody, RNF76 antibody.

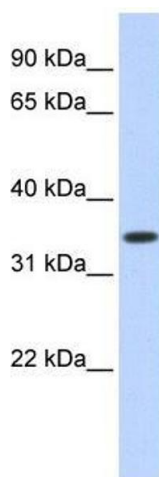
## Application Details

Application Notes:	WB: 0.2-1 µg/mL Optimal conditions should be determined by the investigator.
Comment:	TRIM27 Blocking Peptide, catalog no. 33R-2667, is also available for use as a blocking control in assays to test for specificity of this TRIM27 antibody
Restrictions:	For Research Use only

## Handling

Format:	Lyophilized
Concentration:	Lot specific
Buffer:	Lyophilized powder. Add 50 µL of distilled water. Final antibody concentration is 1 mg/mL in PBS buffer.
Handling Advice:	Avoid repeated freeze/thaw cycles.
Storage:	4 °C/-20 °C
Storage Comment:	Store at 4 °C, following reconstitution, aliquot and store at -20 °C.

## Images



### Western Blotting

**Image 1.** TRIM27 antibody used at 0.2-1 ug/ml to detect target protein.