

Datasheet for ABIN927505
anti-LRRC14 antibody (C-Term)



[Go to Product page](#)

1 Image

Overview

Quantity:	100 µL
Target:	LRRC14
Binding Specificity:	C-Term
Reactivity:	Human, Cow, Mouse, Rat, Dog
Host:	Rabbit
Clonality:	Polyclonal
Conjugate:	This LRRC14 antibody is un-conjugated
Application:	Western Blotting (WB)

Product Details

Immunogen:	LRRC14 antibody was raised in rabbit using the C terminal of LRRC14 as the immunogen
Cross-Reactivity:	Mouse (Murine), Rat (Rattus), Cow (Bovine), Dog (Canine)
Purification:	Purified

Target Details

Target:	LRRC14
Alternative Name:	LRRC14 (LRRC14 Products)
Background:	LRRC14 belongs to the PRAME family and contains 6 LRR (leucine-rich) repeats. Synonyms: Polyclonal LRRC14 antibody, Anti-LRRC14 antibody, leucine rich repeat containing 14 antibody.

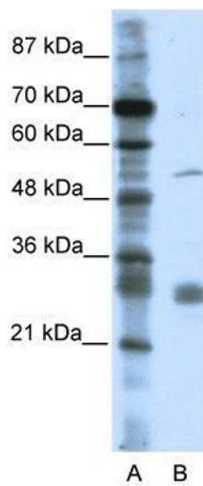
Application Details

Application Notes:	WB: 0.2-1 µg/mL Optimal conditions should be determined by the investigator.
Comment:	LRRC14 Blocking Peptide, catalog no. 33R-2558, is also available for use as a blocking control in assays to test for specificity of this LRRC14 antibody
Restrictions:	For Research Use only

Handling

Format:	Lyophilized
Concentration:	Lot specific
Buffer:	Lyophilized powder. Add 50 µL of distilled water. Final antibody concentration is 1 mg/mL in PBS buffer.
Handling Advice:	Avoid repeated freeze/thaw cycles.
Storage:	4 °C/-20 °C
Storage Comment:	Store at 4 °C, following reconstitution, aliquot and store at -20 °C.

Images



Western Blotting

Image 1. LRRC14 antibody used at 0.2-1 ug/ml to detect target protein.