

Datasheet for ABIN927510 **anti-GRLF1 antibody (N-Term)**



[Go to Product page](#)

1 Image

Overview

Quantity:	100 µL
Target:	GRLF1
Binding Specificity:	N-Term
Reactivity:	Human
Host:	Rabbit
Clonality:	Polyclonal
Conjugate:	This GRLF1 antibody is un-conjugated
Application:	Western Blotting (WB)

Product Details

Immunogen:	GRLF1 antibody was raised in rabbit using the N terminal of GRLF1 as the immunogen
Purification:	Purified

Target Details

Target:	GRLF1
Alternative Name:	GRLF1 (GRLF1 Products)
Background:	The human glucocorticoid receptor DNA binding factor, which associates with the promoter region of the glucocorticoid receptor gene (hGR gene), is a repressor of glucocorticoid receptor transcription. The amino acid sequence deduced from the cDNA sequences show the presence of three sequence motifs characteristic of a zinc finger and one motif suggestive of a leucine zipper in which 1 cysteine is found instead of all leucines. The GRLF1 enhances the

Target Details

homologous down-regulation of wild-type hGR gene expression. Synonyms: Polyclonal GRLF1 antibody, Anti-GRLF1 antibody, glucocorticoid receptor DNA binding factor 1 antibody, ARHGAP35 antibody, GRF-1 antibody, KIAA1722 antibody, MGC10745 antibody, P190-A antibody, P190A antibody, p190ARhoGAP antibody, p190RhoGAP antibody.

Pathways: [Tube Formation](#)

Application Details

Application Notes: WB: 0.2-1 µg/mL
Optimal conditions should be determined by the investigator.

Comment: GRLF1 Blocking Peptide, catalog no. 33R-8106, is also available for use as a blocking control in assays to test for specificity of this GRLF1 antibody

Restrictions: For Research Use only

Handling

Format: Lyophilized

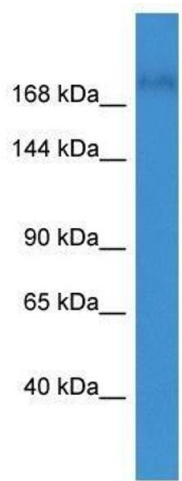
Concentration: Lot specific

Buffer: Lyophilized powder. Add 50 µL of distilled water. Final antibody concentration is 1 mg/mL in PBS buffer.

Handling Advice: Avoid repeated freeze/thaw cycles.

Storage: 4 °C/-20 °C

Storage Comment: Store at 4 °C, following reconstitution, aliquot and store at -20 °C.



Western Blotting

Image 1. GRLF1 antibody used at 0.2-1 ug/ml to detect target protein.