

Datasheet for ABIN927513
anti-ZMYM6 antibody (Middle Region)



[Go to Product page](#)

2 Images

Overview

Quantity:	100 µL
Target:	ZMYM6
Binding Specificity:	Middle Region
Reactivity:	Human, Dog
Host:	Rabbit
Clonality:	Polyclonal
Conjugate:	This ZMYM6 antibody is un-conjugated
Application:	Western Blotting (WB), Immunohistochemistry (IHC)

Product Details

Immunogen:	ZNF258 antibody was raised in rabbit using the middle region of ZNF258 as the immunogen
Cross-Reactivity:	Dog (Canine)
Purification:	Purified

Target Details

Target:	ZMYM6
Alternative Name:	ZNF258 (ZMYM6 Products)
Background:	ZNF258 is part of a novel, putative, zinc-binding motif (MYM) family which encodes proteins that maintain the repeats of the MYM motif. Synonyms: Polyclonal ZNF258 antibody, Anti-ZNF258 antibody.

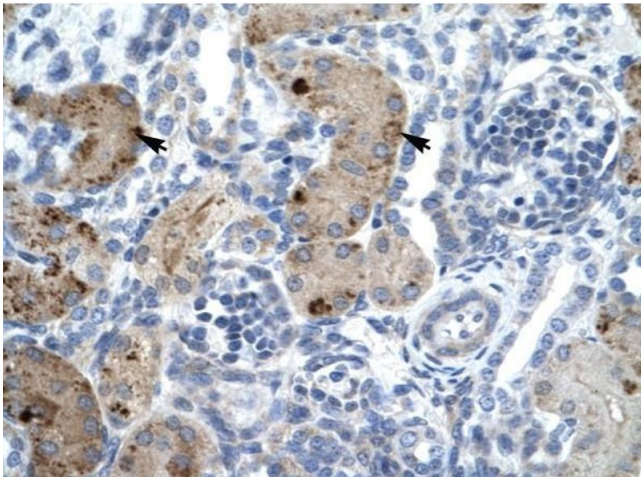
Application Details

Application Notes:	WB: 0.2-1 µg/mL Optimal conditions should be determined by the investigator.
Comment:	ZNF258 Blocking Peptide, catalog no. 33R-9234, is also available for use as a blocking control in assays to test for specificity of this ZNF258 antibody
Restrictions:	For Research Use only

Handling

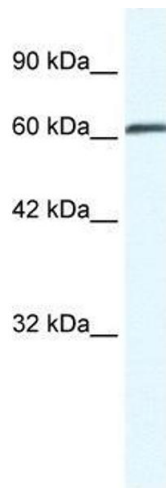
Format:	Lyophilized
Concentration:	Lot specific
Buffer:	Lyophilized powder. Add 50 µL of distilled water. Final antibody concentration is 1 mg/mL in PBS buffer.
Handling Advice:	Avoid repeated freeze/thaw cycles.
Storage:	4 °C/-20 °C
Storage Comment:	Store at 4 °C, following reconstitution, aliquot and store at -20 °C.

Images



Immunohistochemistry

Image 1. ZNF258 antibody was used for immunohistochemistry at a concentration of 4-8 µg/ml to stain Epithelial cells of renal tubule (arrows) in Human Kidney. Magnification is at 400X



Western Blotting

Image 2. ZNF258 antibody used at 0.2-1 ug/ml to detect target protein.