

Datasheet for ABIN927517  
**anti-CLCN1 antibody (C-Term)**



[Go to Product page](#)

1 Image

## Overview

Quantity:	100 µL
Target:	CLCN1
Binding Specificity:	C-Term
Reactivity:	Human, Rat
Host:	Rabbit
Clonality:	Polyclonal
Conjugate:	This CLCN1 antibody is un-conjugated
Application:	Western Blotting (WB)

## Product Details

Immunogen:	Clcn1 antibody was raised in rabbit using the C terminal of Clcn1 as the immunogen
Cross-Reactivity:	Rat (Rattus)
Purification:	Purified

## Target Details

Target:	CLCN1
Alternative Name:	Clcn1 ( <a href="#">CLCN1 Products</a> )
Background:	Clcn1 is the voltage-gated chloride channel. Chloride channels have several functions including the regulation of cell volume, membrane potential stabilization, signal transduction and transepithelial transport. Synonyms: Polyclonal Clcn1 antibody, Anti-Clcn1 antibody, chloride channel 1 antibody, SMCC antibody, Clcn1 antibody.

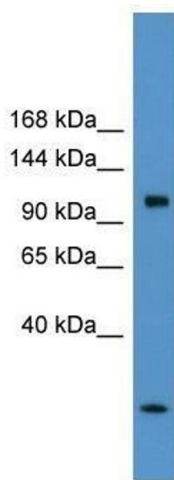
## Application Details

Application Notes:	WB: 0.2-1 µg/mL Optimal conditions should be determined by the investigator.
Comment:	Clcn1 Blocking Peptide, catalog no. 33R-8814, is also available for use as a blocking control in assays to test for specificity of this Clcn1 antibody
Restrictions:	For Research Use only

## Handling

Format:	Lyophilized
Concentration:	Lot specific
Buffer:	Lyophilized powder. Add 50 µL of distilled water. Final antibody concentration is 1 mg/mL in PBS buffer.
Handling Advice:	Avoid repeated freeze/thaw cycles.
Storage:	4 °C/-20 °C
Storage Comment:	Store at 4 °C, following reconstitution, aliquot and store at -20 °C.

## Images



### Western Blotting

**Image 1.** Clcn1 antibody used at 5 ug/ml to detect target protein.