

Datasheet for ABIN927525 **anti-CLIC3 antibody (N-Term)**



[Go to Product page](#)

1 Image

Overview

Quantity:	100 µL
Target:	CLIC3
Binding Specificity:	N-Term
Reactivity:	Human
Host:	Rabbit
Clonality:	Polyclonal
Conjugate:	This CLIC3 antibody is un-conjugated
Application:	Western Blotting (WB)

Product Details

Immunogen:	CLIC3 antibody was raised in rabbit using the N terminal of CLIC3 as the immunogen
Purification:	Purified

Target Details

Target:	CLIC3
Alternative Name:	CLIC3 (CLIC3 Products)
Background:	Chloride channels are a diverse group of proteins that regulate fundamental cellular processes including stabilization of cell membrane potential, transepithelial transport, maintenance of intracellular pH, and regulation of cell volume. Chloride intracellular channel 3 is a member of the p64 family and is predominantly localized in the nucleus and stimulates chloride ion channel activity. In addition, this protein may participate in cellular growth control, based on its

Target Details

association with ERK7, a member of the MAP kinase family. Synonyms: Polyclonal CLIC3 antibody, Anti-CLIC3 antibody, chloride intracellular channel 3 antibody.

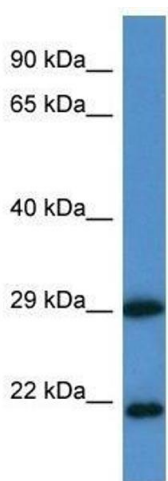
Application Details

Application Notes:	Optimal conditions should be determined by the investigator.
Comment:	CLIC3 Blocking Peptide, catalog no. 33R-10363, is also available for use as a blocking control in assays to test for specificity of this CLIC3 antibody
Restrictions:	For Research Use only

Handling

Format:	Lyophilized
Concentration:	Lot specific
Buffer:	Lyophilized powder. Add 50 μ L of distilled water. Final antibody concentration is 1 mg/mL in PBS buffer.
Handling Advice:	Avoid repeated freeze/thaw cycles.
Storage:	4 $^{\circ}$ C/-20 $^{\circ}$ C
Storage Comment:	Store at 4 $^{\circ}$ C, following reconstitution, aliquot and store at -20 $^{\circ}$ C.

Images



Western Blotting

Image 1. Western Blot showing CLIC3 antibody used at a concentration of 1.0 μ g/ml against THP-1 Cell Lysate