

Datasheet for ABIN927526
anti-CLCA2 antibody (C-Term)



[Go to Product page](#)

1 Image

Overview

Quantity:	100 µL
Target:	CLCA2
Binding Specificity:	C-Term
Reactivity:	Human
Host:	Rabbit
Clonality:	Polyclonal
Conjugate:	This CLCA2 antibody is un-conjugated
Application:	Western Blotting (WB)

Product Details

Immunogen:	CLCA2 antibody was raised in rabbit using the C terminal of CLCA2 as the immunogen
Purification:	Purified

Target Details

Target:	CLCA2
Alternative Name:	CLCA2 (CLCA2 Products)
Background:	The protein encoded by this gene belongs to the calcium sensitive chloride conductance protein family. To date, all members of this gene family map to the same site on chromosome 1p31-p22 and share high degrees of homology in size, sequence and predicted structure, but differ significantly in their tissue distributions. Since this protein is expressed predominantly in trachea and lung, it is suggested to play a role in the complex pathogenesis of cystic fibrosis. It

Target Details

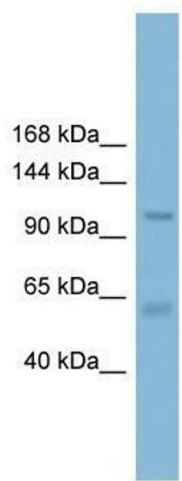
may also serve as adhesion molecule for lung metastatic cancer cells, mediating vascular arrest and colonization, and furthermore, it has been implicated to act as a tumor suppressor gene for breast cancer. Synonyms: Polyclonal CLCA2 antibody, Anti-CLCA2 antibody, chloride channel accessory 2 antibody, CACC antibody, CACC3 antibody, CLCRG2 antibody, CaCC-3 antibody, FLJ97885 antibody.

Application Details

Application Notes:	WB: 0.2-1 µg/mL Optimal conditions should be determined by the investigator.
Comment:	CLCA2 Blocking Peptide, catalog no. 33R-8273, is also available for use as a blocking control in assays to test for specificity of this CLCA2 antibody
Restrictions:	For Research Use only

Handling

Format:	Lyophilized
Concentration:	Lot specific
Buffer:	Lyophilized powder. Add 50 µL of distilled water. Final antibody concentration is 1 mg/mL in PBS buffer.
Handling Advice:	Avoid repeated freeze/thaw cycles.
Storage:	4 °C/-20 °C
Storage Comment:	Store at 4 °C, following reconstitution, aliquot and store at -20 °C.



Western Blotting

Image 1. Western Blot showing CLCA2 antibody used at a concentration of 1-2 ug/ml to detect its target protein.