

Datasheet for ABIN927538
anti-PLA2G4B antibody (N-Term)



[Go to Product page](#)

1 Image

Overview

Quantity:	100 µL
Target:	PLA2G4B
Binding Specificity:	N-Term
Reactivity:	Human, Mouse, Rat, Cow
Host:	Rabbit
Clonality:	Polyclonal
Conjugate:	This PLA2G4B antibody is un-conjugated
Application:	Western Blotting (WB)

Product Details

Immunogen:	PLA2 G2 antibody was raised in rabbit using the N terminal of PLA2 2 as the immunogen
Cross-Reactivity:	Mouse (Murine), Rat (Rattus), Cow (Bovine)
Purification:	Purified

Target Details

Target:	PLA2G4B
Alternative Name:	PLA2G4B (PLA2G4B Products)
Background:	This gene transcribes naturally-occurring mRNAs that are co-transcribed products of the neighboring JMJD7 and PLA2G4B genes. Incompletely processed read-through transcripts from these two loci are abundantly expressed in most tissues, but the function of the predicted protein product has not yet been determined. Alternative splicing of this gene results in different

Target Details

transcript variants, some of which are candidates for nonsense-mediated decay (NMD).

Synonyms: Polyclonal PLA2G4B antibody, Anti-PLA2G4B antibody, phospholipase A2, group IVB, cytosolic antibody, FLJ42498 antibody, HsT16992 antibody, cPLA2-beta antibody.

Pathways: [ER-Nucleus Signaling](#), [VEGF Signaling](#)

Application Details

Application Notes: WB: 0.2-1 µg/mL
Optimal conditions should be determined by the investigator.

Comment: PLA2G4B Blocking Peptide, catalog no. 33R-4288, is also available for use as a blocking control in assays to test for specificity of this PLA2G4B antibody

Restrictions: For Research Use only

Handling

Format: Lyophilized

Concentration: Lot specific

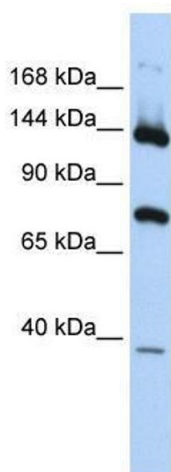
Buffer: Lyophilized powder. Add 50 µL of distilled water. Final antibody concentration is 1 mg/mL in PBS buffer.

Handling Advice: Avoid repeated freeze/thaw cycles.

Storage: 4 °C/-20 °C

Storage Comment: Store at 4 °C, following reconstitution, aliquot and store at -20 °C.

Images



Western Blotting

Image 1. PLA2G4B antibody used at 1.25 ug/ml to detect target protein.